

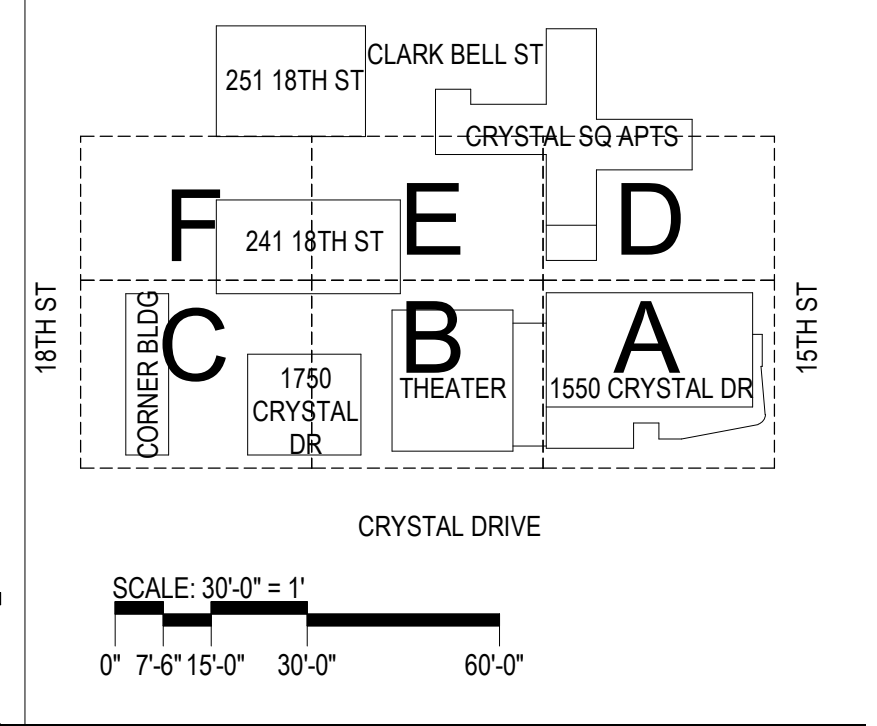
EGRESS PLAN LEGEND

- - - - - 1 HOUR FIRE RATED WALL INDICATION
- - - - - 2 HOUR FIRE RATED WALL INDICATION
- - - - - 3 HOUR FIRE RATED WALL INDICATION
- - - - - SMOKE PARTITION
- - - - - PROPERTY LINE
- - - - - PATH OF TRAVEL FOR EXIT ACCESS DISTANCE OR COMMON PATH OR TRAVEL INDICATIONS
- - - - - SECONDARY EGRESS PATH DIRECTION
- - - - - EXIT FROM FLOOR
- REMOTE POINT
- DECISION POINT
- - - - - DIAGONAL DISTANCE INDICATION
- 10'-0" DIMENSION STRING
- ▨ ACCESSORY STORAGE AREAS, MECH
- ▨ ASSEMBLY - CONCENTRATED (W/O FIXED SEATS)
- ▨ ASSEMBLY - STANDING SPACE
- ▨ ASSEMBLY - UNCONCENTRATED (TABLES AND CHAIRS)
- ▨ KITCHENS, COMMERCIAL
- ▨ BUSINESS AREAS
- ▨ MERCANTILE
- ▨ OPEN TO BELOW
- ▨ NOT IN SCOPE
- ▨ AREA OF EGRESS DEMOLITION
- EGRESS COMPONENT
- CLEAR OPENING SIZE (INCHES)
- MAXIMUM ALLOWABLE LOAD
- STAR/DOOR CAPACITY SYMBOL PER VCC SECTION 1005
- LENGTH - COMMON PATH OF TRAVEL
- LENGTH - PRIMARY PATH OF EGRESS

GENERAL NOTES

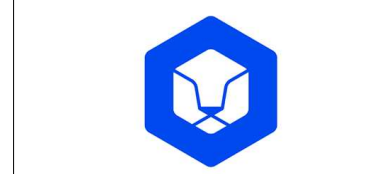
- GN-01.** THEATER INTERIOR LAYOUT SHOWN FOR INFORMATION ONLY. THEATER INTERIORS WILL BE PERMITTED SEPARATELY.
- GN-02.** PER VCC SECTIONS 712.1.3, 1009.3 (EXCEPTION 1), AND 1028.2, THE "MONUMENTAL" MAIN EGRESS STAIR MEETS THE REQUIREMENTS FOR AN ESCALATOR OPENING AND EXIT ACCESS STAIR. ESCALATOR OPENING PROTECTED BY DRAFT CURTAINS AND CLOSELY SPACED SPRINKLERS PER VCC SECTION 712.1.3. PER VCC SECTION 1028.2, MAIN EGRESS STAIR ACCOMMODATES 1/2 OCCUPANT LOAD.
- GN-03.** THE THEATER BUILDING WILL DISCHARGE NOT LESS THAN ONE-HALF THE OCCUPANT LOAD AT THE MAIN EXIT ON G1. ALL REMAINING OCCUPANTS WILL DISCHARGE ON PLAZA TO 15TH STREET.
- GN-04.** EXISTING STAIR REMOVED AND NEW STAIR LOCATED. OCCUPANCY POTENTIAL NOT REDUCED. NEW STAIR MUST BE COMPLETE AND USABLE PRIOR TO THE DEMOLITION OF EXISTING STAIRS.
- GN-05.** EXISTING STAIR AND NEW DOOR. NEW DOOR CLEAR OPENING PROVIDED.
- GN-06.** ALL WALLS BETWEEN USABLE SPACE AND AREA OF CONSTRUCTION TO REMAIN ARE TO HAVE TYPE B WALL ADDED TO CONSTRUCTION SIDE OF WALL U.N.O.
- GN-07.** TO DETERMINE THE CLEAR WIDTH OF DOOR OPENINGS, 3" WERE DEDUCTED FROM THE WIDTH OF THE DOOR LEAF TO ACCOUNT FOR THE DEPTH OF THE LEAF PROJECTING INTO THE CLEAR WIDTH OF THE FRAME WHEN OPEN 90 DEGREES.

KEY PLAN



CENTRAL DISTRICT RETAIL PHASE I

1500-1790 Crystal Drive
Arlington, VA 22202



4445 Willard Avenue
Suite 400
Cherry Chase, MD 20815
Tel: 240.333.3600

Gensler

2020 K Street NW
Suite 103
Washington, DC 20006
United States

Tel: 202.721.6200
Fax: 202.872.8697

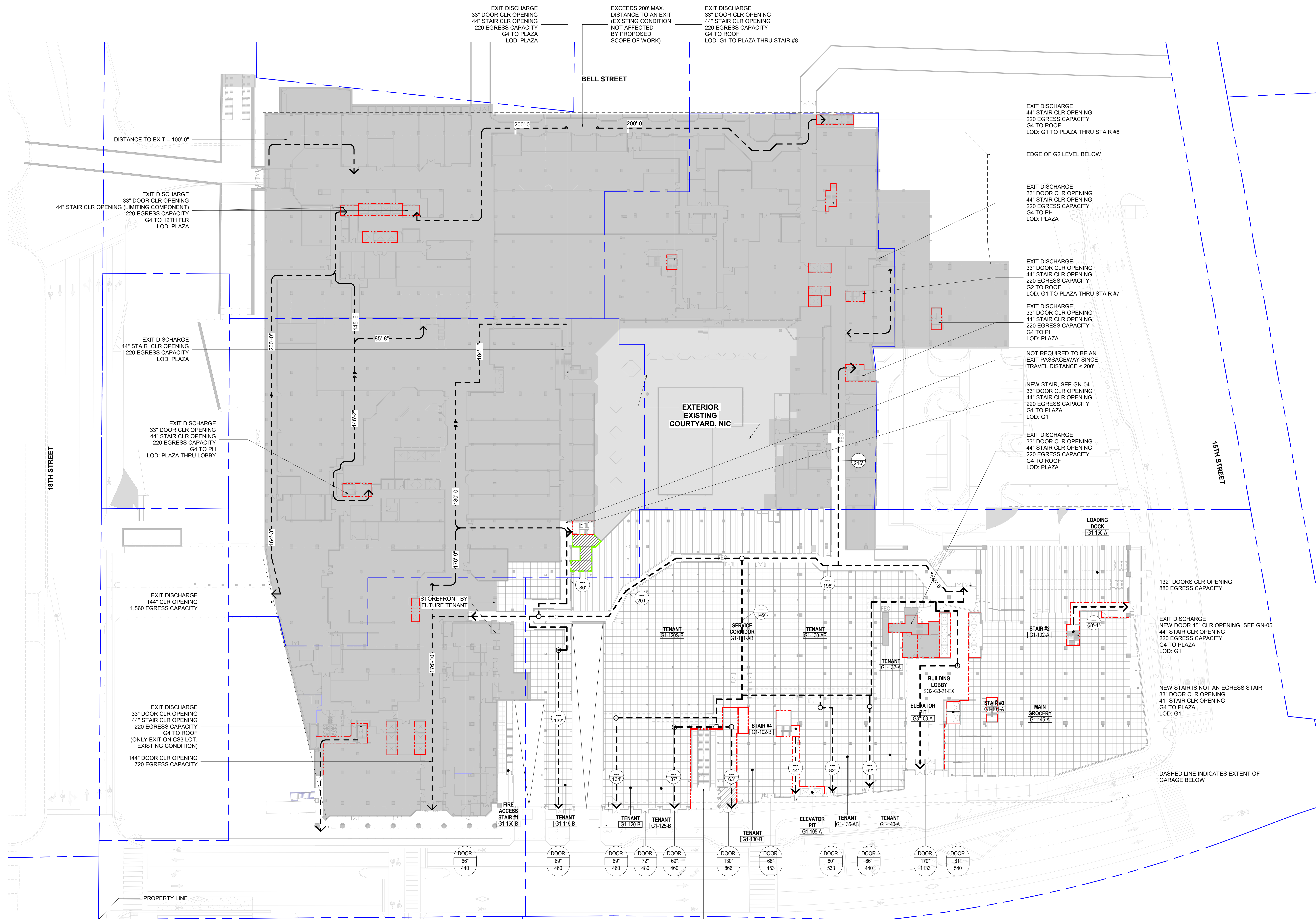
Date: 05/01/2018
Description: PROGRESS PRINT

Seal / Signature

Project Name: CENTRAL DISTRICT RETAIL PHASE I
Project Number: 09.8202.000
Description: OCCUPANCY AND EGRESS ANALYSIS ENTIRE BLOCK - LEVEL G1

Scale: As indicated

G2-13



AREA AND OCCUPANT LOAD

TOTAL EGRESS CAPACITY: 7,145

OCCUPANCY TYPE	AREA	SQFT/OCCUPANT	SQFT TYPE	OCCUPANT LOAD	NOTES
CS2 LOT - BUSINESS AREAS	3,837 SF	100	GROSS	39	
CS2 LOT - ASSEMBLY - STANDING SPACE	252 SF	5	NET	51	
CS2 LOT - MERCANTILE	2,457 SF	30	GROSS	82	
CS2 LOT - MERCANTILE	3,599 SF	30	GROSS	120	
CS2 LOT - MERCANTILE	4,594 SF	30	GROSS	154	
CS2 LOT - MERCANTILE	2,106 SF	30	GROSS	71	
CS2 LOT - MERCANTILE	3,183 SF	30	GROSS	107	
CS2 LOT - MERCANTILE	5,296 SF	30	GROSS	177	
CS2 LOT - MERCANTILE	10,919 SF	30	GROSS	364	
CS2 LOT - MERCANTILE	9,988 SF	30	GROSS	333	
CS2 LOT - MERCANTILE	16,167 SF	30	GROSS	539	
CS2 LOT - MERCANTILE	897 SF	30	GROSS	30	
CS2 LOT - ACCESSORY STORAGE AREAS, MECH	59,196 SF	300	GROSS	1,978	
CS2 LOT - ACCESSORY STORAGE AREAS, MECH	6,271 SF	300	GROSS	21	
CS2 LOT - ACCESSORY STORAGE AREAS, MECH	5,480 SF	300	GROSS	19	
CS2 LOT - ACCESSORY STORAGE AREAS, MECH	11,751 SF	300	GROSS	40	
CS1 LOT - ACCESSORY STORAGE AREAS, MECH	20 SF	300	GROSS	1	

OCCUPANCY TYPE	AREA	SQFT/OCCUPANT	SQFT TYPE	OCCUPANT LOAD	NOTES
CS2 LOT - MERCANTILE	20 SF	30	GROSS	1	
CS2 LOT - EXISTING ACCESSORY STORAGE AREAS, MECH NOT IN SCOPE	467 SF	300	GROSS	16	
CS2 LOT - ACCESSORY STORAGE AREAS, MECH	728 SF	300	GROSS	3	NOT IN SCOPE
CS2 LOT - ACCESSORY STORAGE AREAS, MECH	1,003 SF	300	GROSS	4	
CS2 LOT - ACCESSORY STORAGE AREAS, MECH	2,198 SF	300	GROSS	23	
CS2 LOT - EXISTING ACCESSORY STORAGE AREAS, MECH NOT IN SCOPE	1,110 SF	300	GROSS	4	NOT IN SCOPE
CS2 LOT - EXISTING ACCESSORY STORAGE AREAS, MECH NOT IN SCOPE	59 SF	300	GROSS	1	NOT IN SCOPE
CS2 LOT - EXISTING ACCESSORY STORAGE AREAS, MECH NOT IN SCOPE	109 SF	300	GROSS	1	NOT IN SCOPE
CS2 LOT - EXISTING ACCESSORY STORAGE AREAS, MECH NOT IN SCOPE	506 SF	300	GROSS	2	NOT IN SCOPE
CS2 LOT - MERCANTILE	1,943 SF	30	GROSS	65	
CS3 LOT - MERCANTILE	3,727 SF	30	GROSS	73	
CS3 LOT - MERCANTILE	587 SF	30	GROSS	20	
CS4 LOT - MERCANTILE	516 SF	30	GROSS	20	
CS4 LOT - ACCESSORY STORAGE AREAS, MECH	1,801 SF	300	GROSS	18	
CS4 LOT - ACCESSORY STORAGE AREAS, MECH	2,118 SF	300	GROSS	24	
TOTAL	83,685 SF			2,248	

5/1/2018 12:27:13 PM \\gensler-ar\projects\central-district-retail\phase-i\g2-13\sheet\g2-13.dwg - JBG SMITH Block - 0011 - 220814

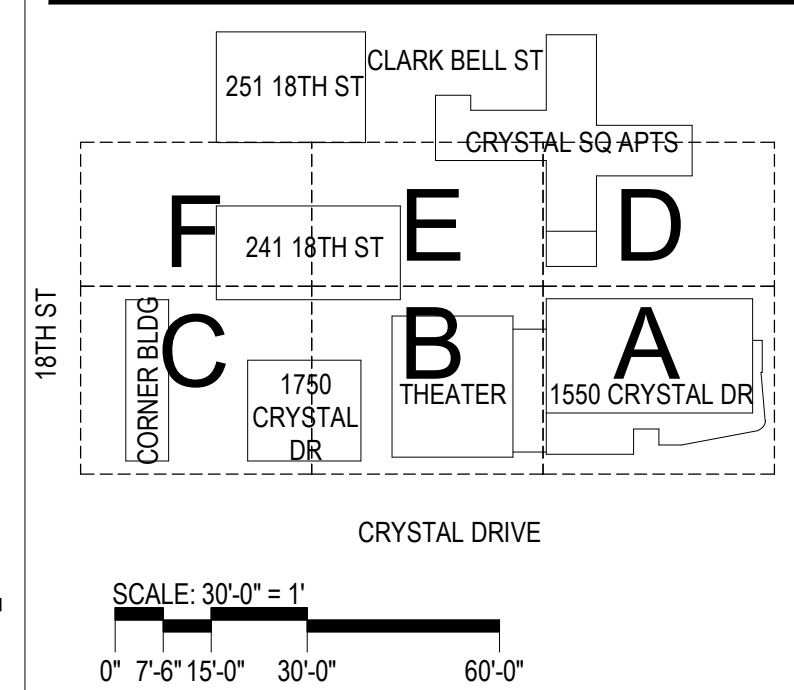
EGRESS PLAN LEGEND

- - - - - 1 HOUR FIRE RATED WALL INDICATION
- - - - - 2 HOUR FIRE RATED WALL INDICATION
- - - - - 3 HOUR FIRE RATED WALL INDICATION
- - - - - SMOKE PARTITION
- - - - - PROPERTY LINE
- - - - - PATH OF TRAVEL FOR EXIT ACCESS DISTANCE OR COMMON PATH OR TRAVEL INDICATIONS
- - - - - SECONDARY EGRESS PATH DIRECTION
- EXIT FROM FLOOR
- REMOTE POINT
- DECISION POINT
- - - - - DIAGONAL DISTANCE INDICATION
- - - - - DIMENSION STRING
- ACCESSORY STORAGE AREAS, MECH
- ASSEMBLY - CONCENTRATED (W/O FIXED SEATS)
- ASSEMBLY - STANDING SPACE
- ASSEMBLY - UNCONCENTRATED (TABLES AND CHAIRS)
- KITCHENS, COMMERCIAL
- BUSINESS AREAS
- MERCANTILE
- OPEN TO BELOW
- NOT IN SCOPE
- AREA OF EGRESS DEMOLITION
- DOOR EGRESS COMPONENT
- 33" CLEAR OPENING SIZE (INCHES)
- 220 MAXIMUM ALLOWABLE LOAD
- 50'-0" STAIR/DOOR CAPACITY SYMBOL PER VCC SECTION 1005
- 100'-0" LENGTH - COMMON PATH OF TRAVEL
- 100'-0" LENGTH - PRIMARY PATH OF EGRESS

GENERAL NOTES

- GN-01.** THEATER INTERIOR LAYOUT SHOWN FOR INFORMATION ONLY. THEATER INTERIORS WILL BE PERMITTED SEPARATELY.
- GN-02.** PER VCC SECTIONS 712.1.3, 1009.3 (EXCEPTION 1), AND 1028.2, THE "MONUMENTAL" MAIN EGRESS STAIR MEETS THE REQUIREMENTS FOR AN ESCALATOR OPENING AND EXIT ACCESS STAIR. ESCALATOR OPENING PROTECTED BY DRAFT CURTAINS AND CLOSELY SPACED SPRINKLERS PER VCC SECTION 712.1.3. PER VCC SECTION 1028.2, MAIN EGRESS STAIR ACCOMMODATES 1/2 OCCUPANT LOAD.
- GN-03.** THE THEATER BUILDING WILL DISCHARGE NOT LESS THAN ONE-HALF THE OCCUPANT LOAD AT THE MAIN EXIT ON G1. ALL REMAINING OCCUPANTS WILL DISCHARGE ON PLAZA TO 15TH STREET.
- GN-04.** EXISTING STAIR REMOVED AND NEW STAIR LOCATED. OCCUPANCY POTENTIAL NOT REDUCED. NEW STAIR MUST BE COMPLETE AND USABLE PRIOR TO THE DEMOLITION OF EXISTING STAIRS.
- GN-05.** EXISTING STAIR AND NEW DOOR. NEW DOOR CLEAR OPENING PROVIDED.
- GN-06.** ALL WALLS BETWEEN USABLE SPACE AND AREA OF CONSTRUCTION TO REMAIN ARE TO HAVE TYPE B WALL ADDED TO CONSTRUCTION SIDE OF WALL U.N.O.
- GN-07.** TO DETERMINE THE CLEAR WIDTH OF DOOR OPENINGS, 3" WERE DEDUCTED FROM THE WIDTH OF THE DOOR LEAF TO ACCOUNT FOR THE DEPTH OF THE LEAF PROJECTING INTO THE CLEAR WIDTH OF THE FRAME WHEN OPEN 90 DEGREES.

KEY PLAN



CENTRAL DISTRICT RETAIL PHASE I

1500-1790 Crystal Drive
Arlington, VA 22202



4445 Willard Avenue
Suite 400
Chevy Chase, MD 20815
Tel: 202.333.3600

Gensler

2020 K Street NW
Suite 103
Washington, DC 20006
United States

Tel: 202.721.6200
Fax: 202.872.8697

Date: 05/01/2018 Description: PROGRESS PRINT

Seal / Signature

Project Name: CENTRAL DISTRICT RETAIL PHASE I

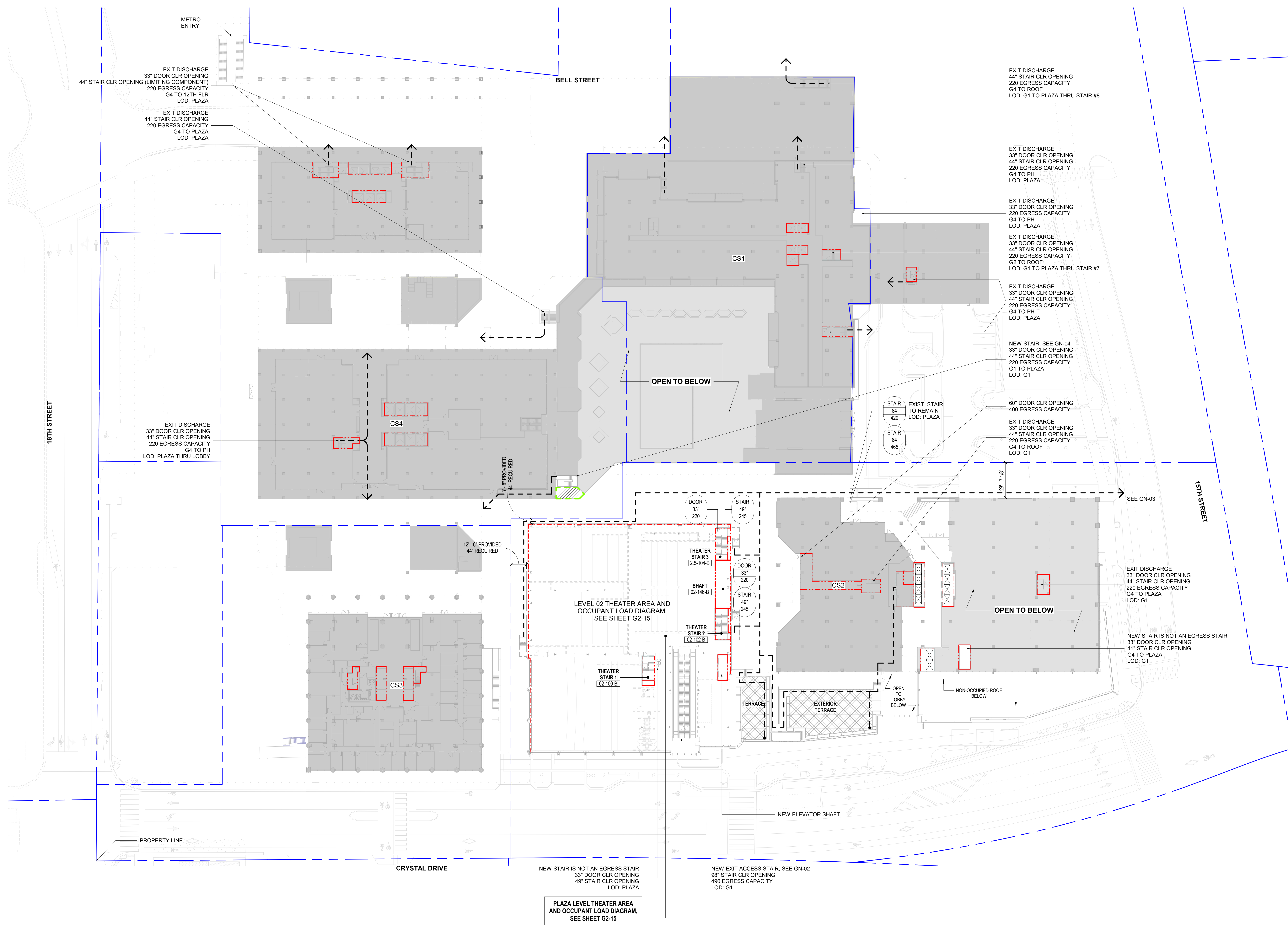
Project Number: 09.8202.000

Description: OCCUPANCY AND EGRESS ANALYSIS ENTIRE BLOCK - PLAZA LEVEL

Scale: As indicated

G2-14

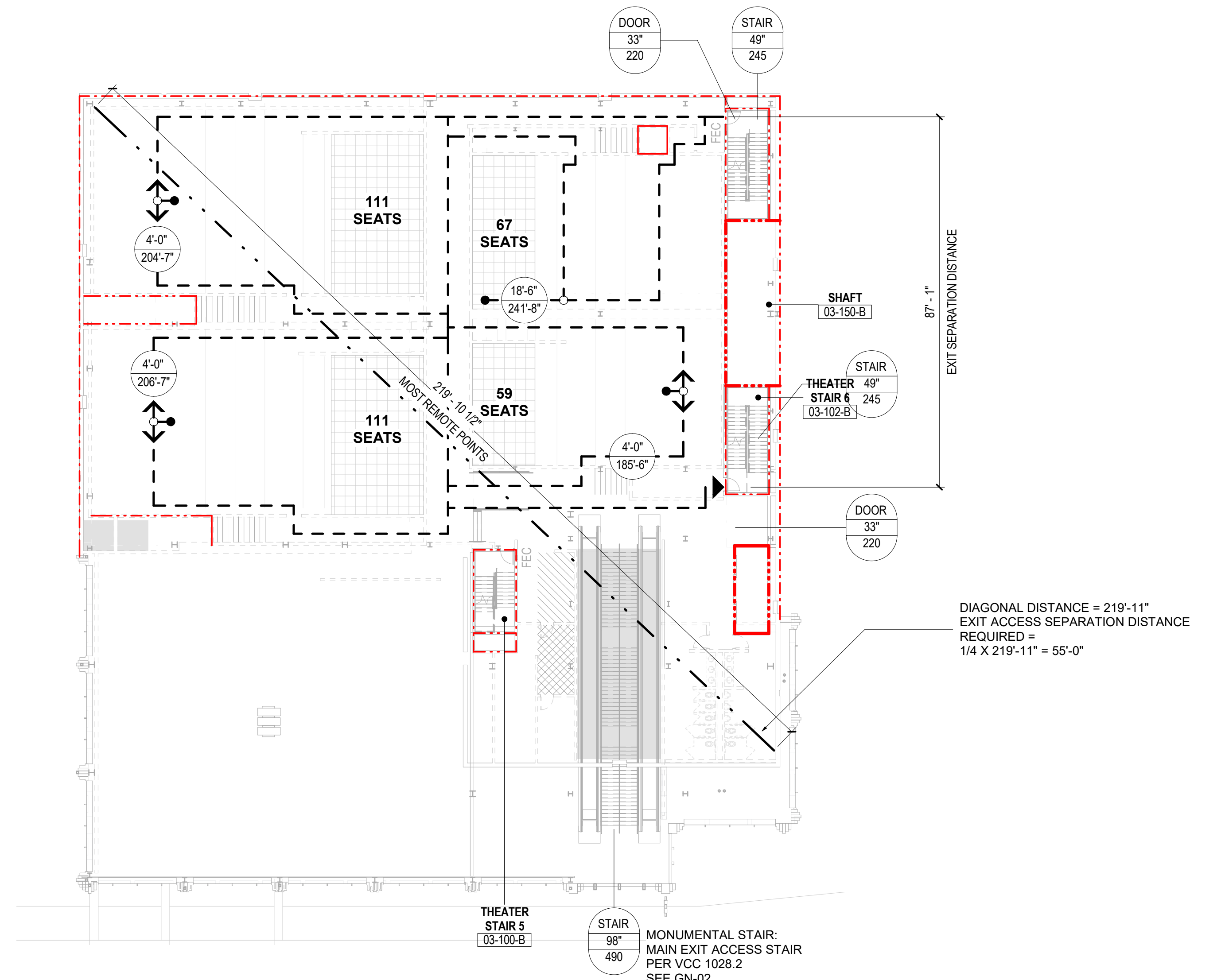
© 2018 Gensler



AREA AND OCCUPANT LOAD

TOTAL OCCUPANT LOAD DISCHARGED TO PLAZA: 510 (LESS HALF LEVEL 02 THEATER OCCUPANT LOAD)
TOTAL EGRESS CAPACITY: 885

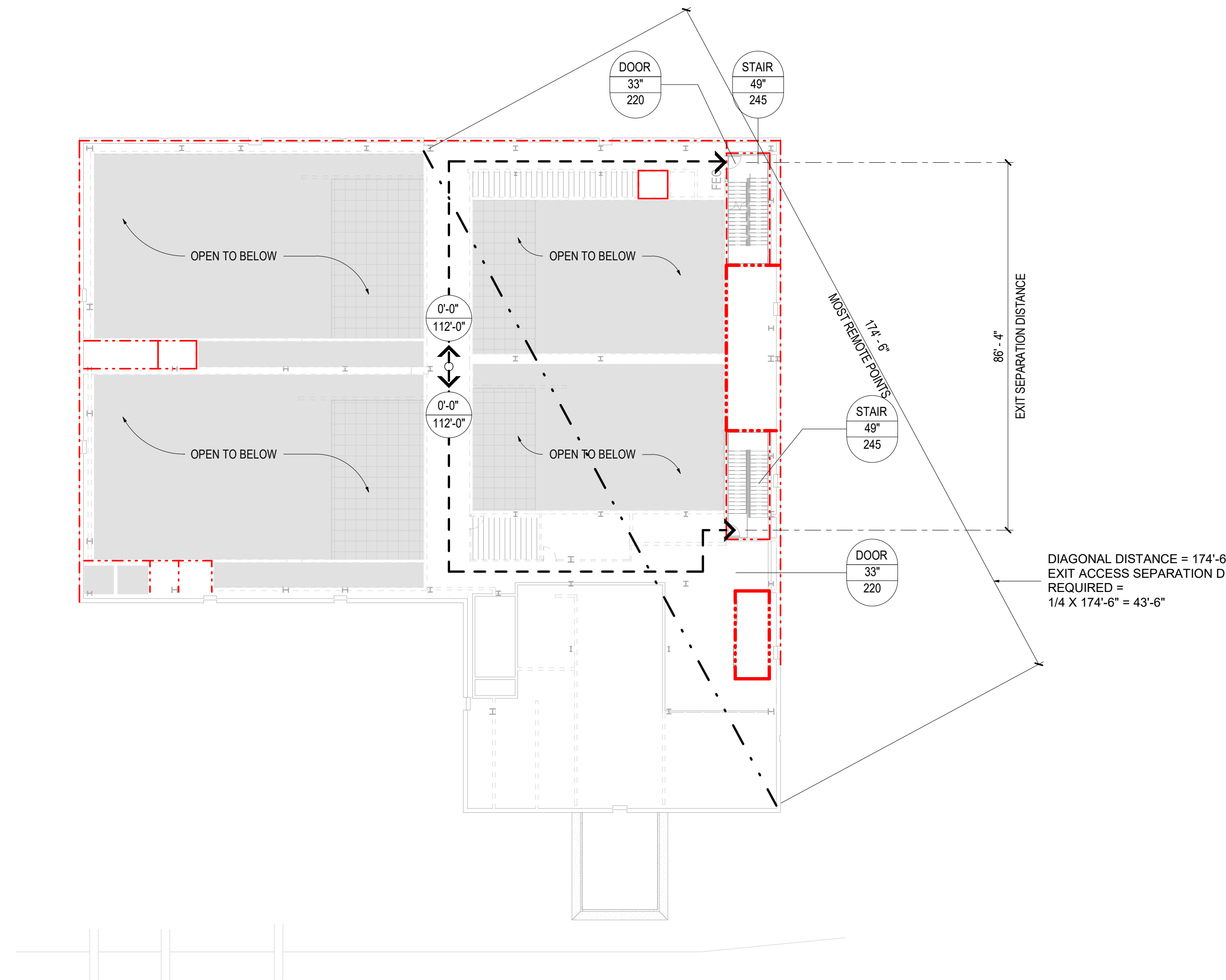
OCCUPANCY TYPE	AREA	SQFT/OCCUPANT	SQFT TYPE	OCCUPANT LOAD	NOTES
CS2 THEATER - FIXED SEATING				591	
CS2 LOT - ASSEMBLY - UNCONCENTRATED (TABLES AND CHAIRS)	3,235 SF	15	NET	217	
CS2 LOT - BUSINESS AREAS	2,304 SF	100	GROSS	24	
CS2 LOT - EXISTING BUSINESS AREAS NOT IN SCOPE	11,560 SF	100	GROSS	116	NOT IN SCOPE
CS2 THEATER - ACCESSORY STORAGE AREAS, MECH	602 SF	300	GROSS	5	
CS2 THEATER - ASSEMBLY - STANDING SPACE	140 SF	5	NET	28	
CS2 THEATER - ASSEMBLY - UNCONCENTRATED (TABLES AND CHAIRS)	1,716 SF	15	NET	115	
CS2 THEATER - KITCHENS, COMMERCIAL	106 SF	200	GROSS	881	
TOTAL				506	



AREA AND OCCUPANT LOAD
TOTAL EGRESS CAPACITY: 440

OCCUPANCY TYPE	AREA	SQFT/OCCUPANT	SQFT TYPE	OCCUPANT LOAD	NOTES
CS2 THEATER - FIXED SEATING				348	
CS2 THEATER - ACCESSORY STORAGE AREAS, MECH	299 SF	300	GROSS	3	
CS2 THEATER - ASSEMBLY - UNCONCENTRATED (TABLES AND CHAIRS)	139 SF	15	NET	10	
CS2 THEATER - KITCHENS, COMMERCIAL	140 SF	200	GROSS	1	
TOTAL	577 SF			362	

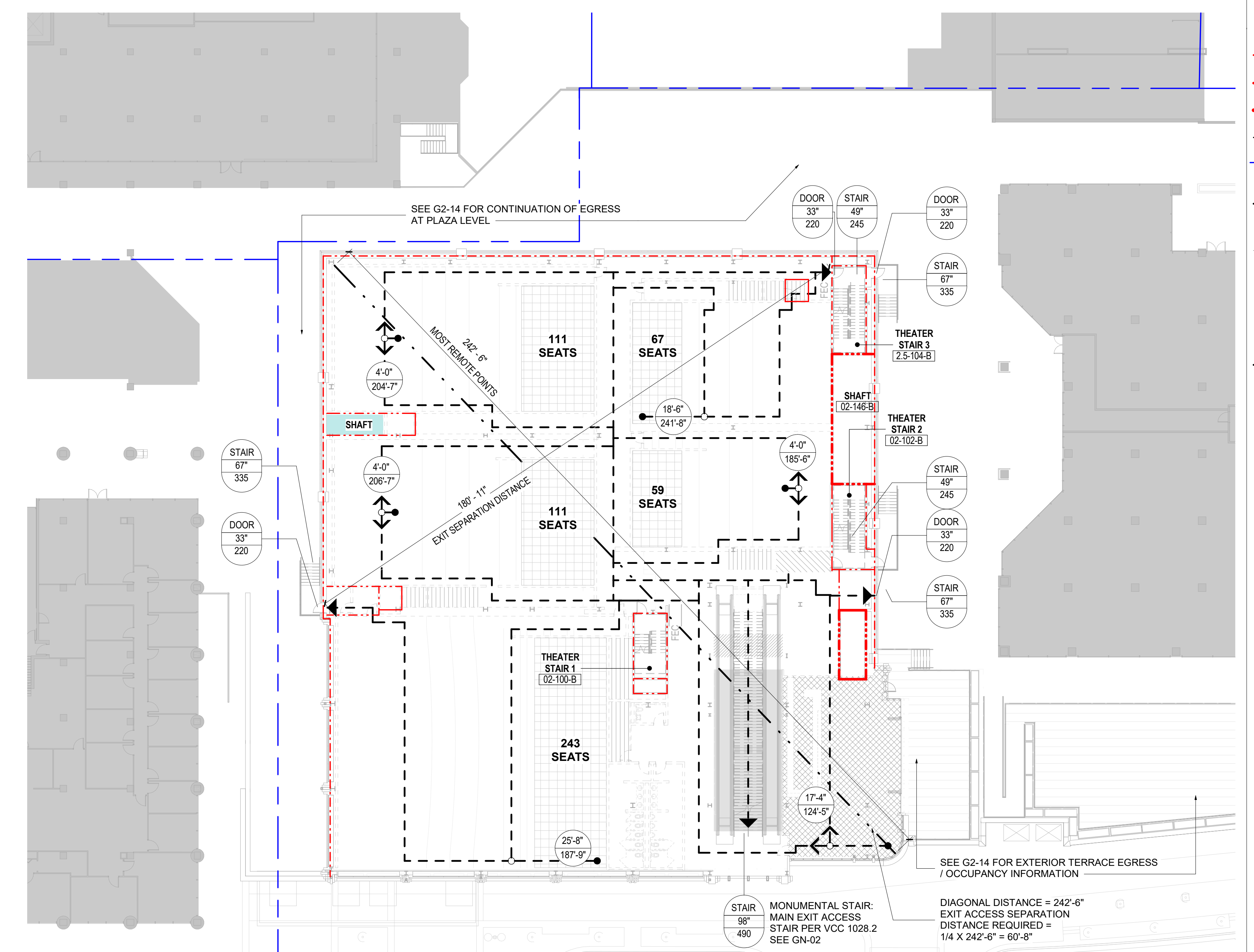
03 LIFE SAFETY & EGRESS - LEVEL 03 - THEATER
SCALE: 1" = 20'-0"



AREA AND OCCUPANT LOAD
TOTAL EGRESS CAPACITY: 440

OCCUPANCY TYPE	AREA	SQFT/OCCUPANT	SQFT TYPE	OCCUPANT LOAD	NOTES
CS2 THEATER - ACCESSORY STORAGE AREAS, MECH	389 SF	300	GROSS	2	
CS2 THEATER - BUSINESS AREAS	203 SF	100	GROSS	3	
CS2 THEATER - PROJECTION EQUIPMENT AREA	5,322 SF	300	GROSS	18	NON OCCUPIED SPACES
TOTAL	5,913 SF			23	

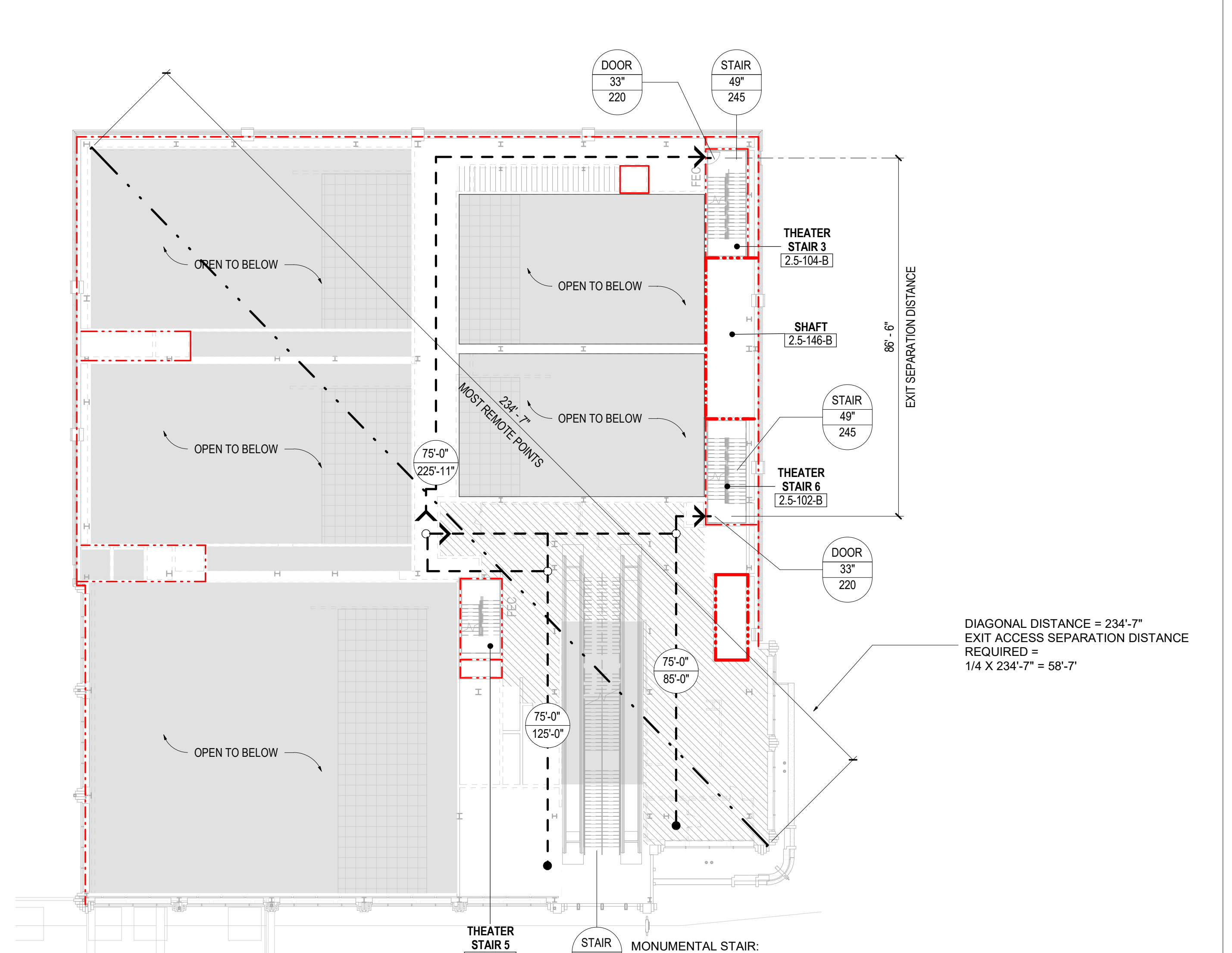
04 LIFE SAFETY & EGRESS - LEVEL 3.5 - THEATER (PROJECTION LEVEL)
SCALE: 1" = 20'-0"



AREA AND OCCUPANT LOAD
TOTAL EGRESS CAPACITY: * 980 PER VCC 1028.2

OCCUPANCY TYPE	AREA	SQFT/OCCUPANT	SQFT TYPE	OCCUPANT LOAD	NOTES
CS2 THEATER - FIXED SEATING				591	
CS2 THEATER - ACCESSORY STORAGE AREAS, MECH	602 SF	300	GROSS	5	
CS2 THEATER - ASSEMBLY - STANDING SPACE	140 SF	5	NET	28	
CS2 THEATER - ASSEMBLY - UNCONCENTRATED (TABLES AND CHAIRS)	1,716 SF	15	NET	115	
CS2 THEATER - KITCHENS, COMMERCIAL	106 SF	200	GROSS	1	
TOTAL	2,563 SF			741	

01 LIFE SAFETY & EGRESS - LEVEL 02 - THEATER
SCALE: 1" = 20'-0"



AREA AND OCCUPANT LOAD
TOTAL EGRESS CAPACITY: 440

OCCUPANCY TYPE	AREA	SQFT/OCCUPANT	SQFT TYPE	OCCUPANT LOAD	NOTES
CS2 THEATER - ACCESSORY STORAGE AREAS, MECH	233 SF	300	GROSS	1	
CS2 THEATER - BUSINESS AREAS	168 SF	100	GROSS	2	
CS2 THEATER - KITCHENS, COMMERCIAL	3,320 SF	200	GROSS	17	
CS2 THEATER - PROJECTION EQUIPMENT AREA	1,371 SF	300	GROSS	5	NON OCCUPIED SPACES
TOTAL	5,091 SF			26	

02 LIFE SAFETY & EGRESS - LEVEL 2.5 - THEATER (KITCHEN)
SCALE: 1" = 20'-0"

EGRESS PLAN LEGEND

- 1 HOUR FIRE RATED WALL INDICATION
- 2 HOUR FIRE RATED WALL INDICATION
- 3 HOUR FIRE RATED WALL INDICATION
- SMOKE PARTITION
- PROPERTY LINE
- PATH OF TRAVEL FOR EXIT ACCESS DISTANCE OR COMMON PATH OR TRAVEL INDICATIONS
- SECONDARY EGRESS PATH DIRECTION
- EXIT FROM FLOOR
- REMOTE POINT
- DECISION POINT
- DIAGONAL DISTANCE INDICATION
- DIMENSION STRING
- ACCESSORY STORAGE AREAS, MECH
- ASSEMBLY - CONCENTRATED (W/O FIXED SEATS)
- ASSEMBLY - STANDING SPACE
- ASSEMBLY - UNCONCENTRATED (TABLES AND CHAIRS)
- KITCHENS, COMMERCIAL
- BUSINESS AREAS
- MERCANTILE
- OPEN TO BELOW
- NOT IN SCOPE
- AREA OF EGRESS DEMOLITION

EGRESS COMPONENT

- DOOR
- CLEAR OPENING SIZE (INCHES)
- MAXIMUM ALLOWABLE LOAD

STAIR/DOOR CAPACITY SYMBOL PER VCC SECTION 1005

- LENGTH - COMMON PATH OF TRAVEL
- LENGTH - PRIMARY PATH OF EGRESS

GENERAL NOTES

- GN-01. THEATER INTERIOR LAYOUT SHOWN FOR INFORMATION ONLY. THEATER INTERIORS WILL BE PERMITTED SEPARATELY.
- GN-02. PER VCC SECTIONS 712.1.3, 1009.3 (EXCEPTION 1), AND 1028.2, THE 'MONUMENTAL' MAIN EGRESS STAIR MEETS THE REQUIREMENTS FOR AN ESCALATOR OPENING AND EXIT ACCESS STAIR. ESCALATOR OPENING PROTECTED BY DRAFT CURTAINS AND CLOSELY SPACED SPRINKLERS PER VCC SECTION 712.1.3, PER VCC SECTION 1028.2, MAIN EGRESS STAIR ACCOMMODATES 1/2 OCCUPANT LOAD.
- GN-03. THE THEATER BUILDING WILL DISCHARGE NOT LESS THAN ONE-HALF THE OCCUPANT LOAD AT THE MAIN EXIT ON G1. ALL REMAINING OCCUPANTS WILL DISCHARGE ON PLAZA TO 15TH STREET.
- GN-04. EXISTING STAIR REMOVED AND NEW STAIR LOCATED. OCCUPANCY POTENTIAL NOT REDUCED. NEW STAIR MUST BE COMPLETE AND USABLE PRIOR TO THE DEMOLITION OF EXISTING STAIRS.
- GN-05. EXISTING STAIR AND NEW DOOR. NEW DOOR CLEAR OPENING PROVIDED.
- GN-06. ALL WALLS BETWEEN USABLE SPACE AND AREA OF CONSTRUCTION TO REMAIN ARE TO HAVE TYPE B WALL ADDED TO CONSTRUCTION SIDE OF WALL U.N.O.
- GN-07. TO DETERMINE THE CLEAR WIDTH OF DOOR OPENINGS, 3" WERE DEDUCTED FROM THE WIDTH OF THE DOOR LEAF TO ACCOUNT FOR THE DEPTH OF THE LEAF PROJECTING INTO THE CLEAR WIDTH OF THE FRAME WHEN OPEN 90 DEGREES.

CENTRAL DISTRICT RETAIL PHASE I

1500-1790 Crystal Drive
Arlington, VA 22202

JBG SMITH
4445 Willard Avenue
Suite 400
Chevy Chase, MD 20815
Tel: 240.333.3600

Gensler
2020 K Street NW
Suite 1103
Washington, DC 20006
United States
Tel: 202.721.6200
Fax: 202.872.8697

Date	Description
05/01/2018	PROGRESS PRINT

Seal / Signature

Project Name
CENTRAL DISTRICT RETAIL PHASE I
Project Number
09.8202.000
Description
OCCUPANCY AND EGRESS ANALYSIS - THEATER LEVELS

Scale
As indicated

G2-15