

Owner
Central Place II, L.L.C.
c/o The JBG Companies
4445 Willard Ave
Suite 400
Chevy Chase, MD 20815
240.333.3600

Architect
Beyer Blinder Belle
Architects and Planners
3307 M Street NW
Suite 301
Washington, DC 20007
202.333.8000

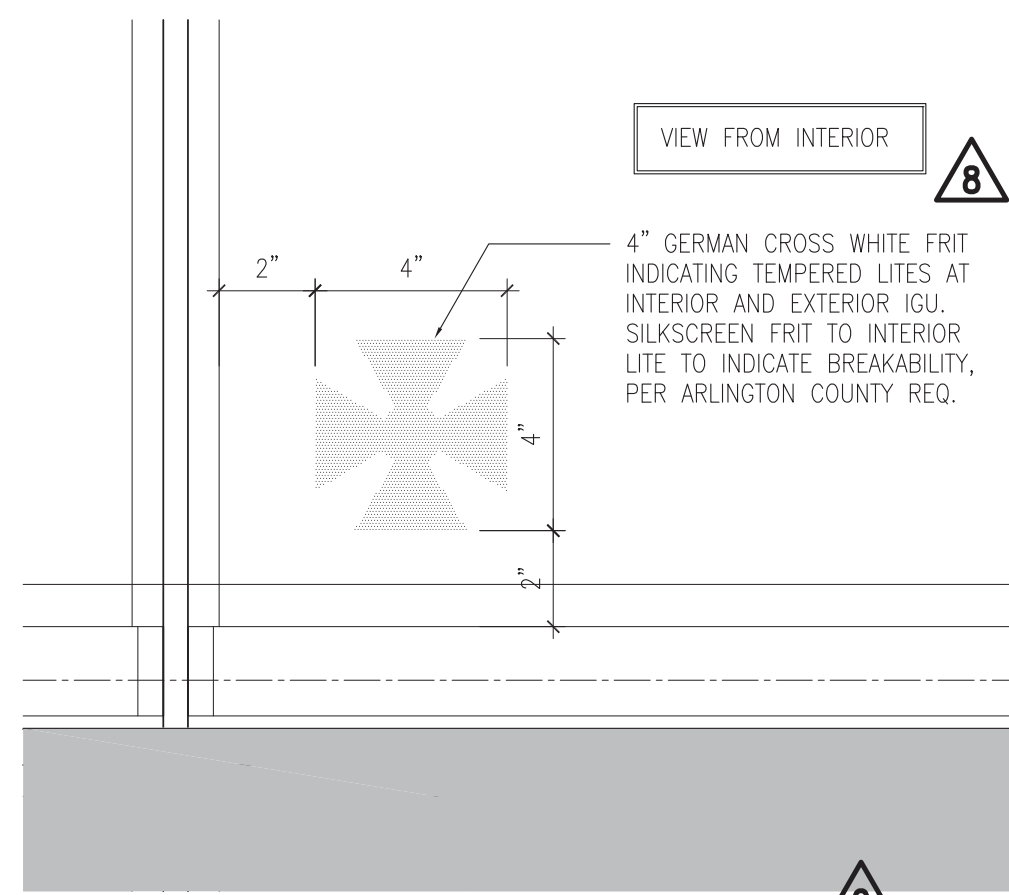
Structural Engineer
Tadger-Cohen-Edelson
Associates, Inc.
1109 Spring Street Suite 608
Silver Spring, MD 20910
301.587.1820

MEP Engineer
Dewberry
8401 Arlington Boulevard Suite 600
Fairfax, VA 22031
703.698.9440

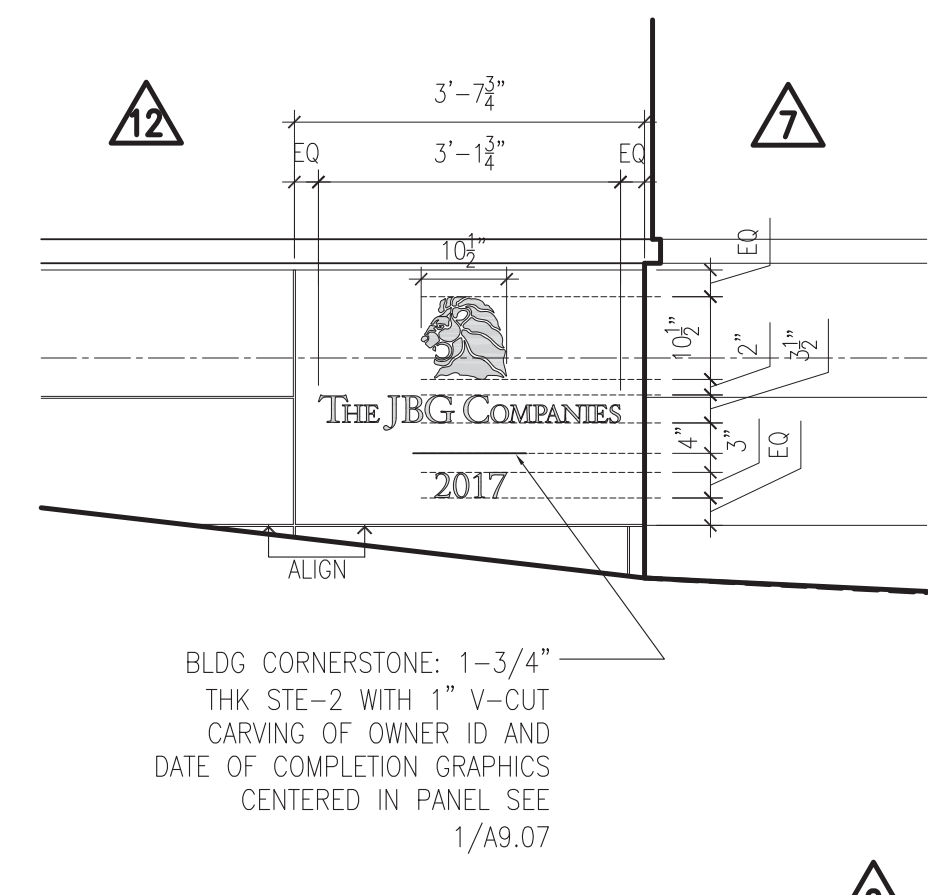
Civil Engineer
Bowman Consulting Group
14020 Thunderbolt Place, Suite 300
Chantilly, VA 20151
703.464.1000

Landscape Architect
Michael Vergason Landscape
Architects, LTD
1102 King Street, 2nd floor
Alexandria, VA 22314
703.836.5557

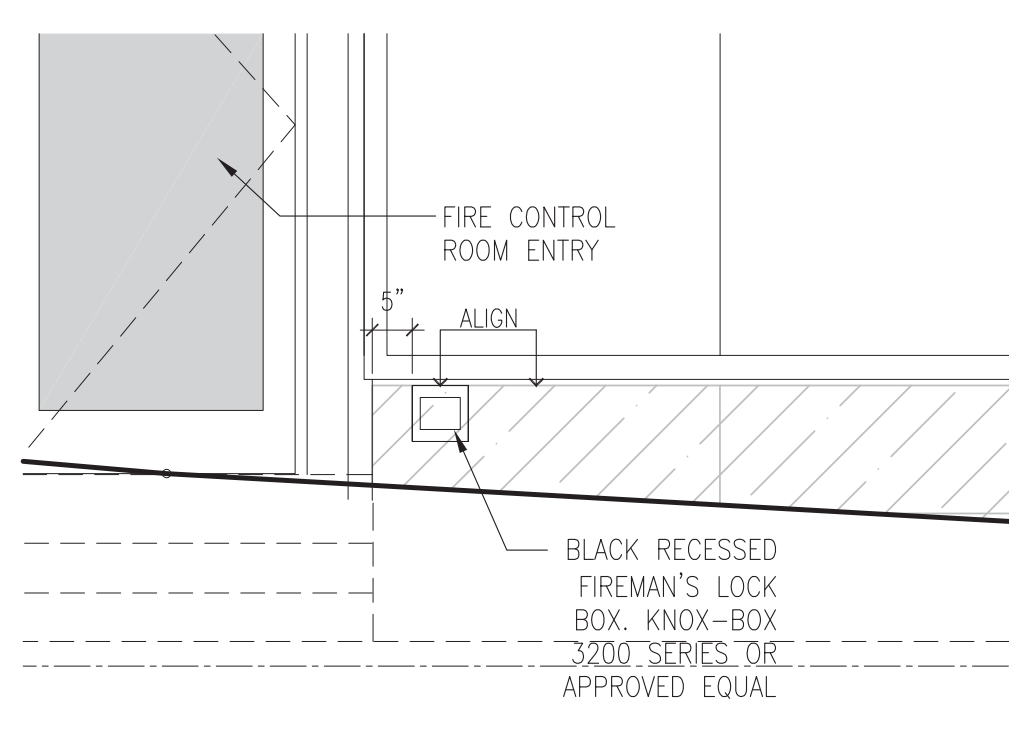
Parking
Walker Parking Consultants
900 West Valley Road, Suite 800
Warner, PA 15067
610.995.0260



8 FIREMAN'S LOGO - ELEVATION
A3.04 3/8"=1'-0"



7 CORNERSTONE
A3.04 1/2"=1'-0"

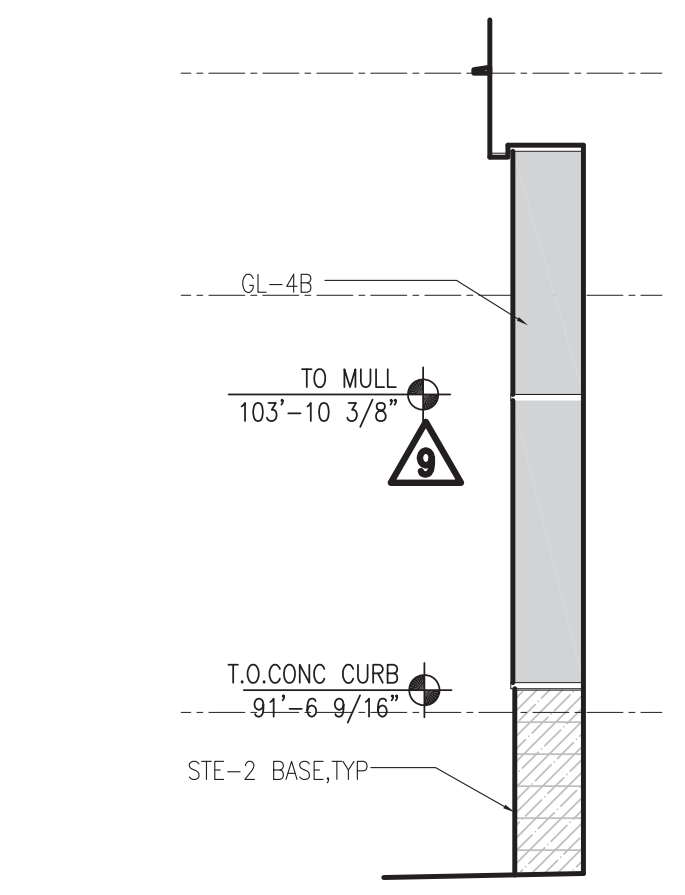


9 SOUTH BUILDING ELEVATION
FIREMAN'S KEYBOX LOCATION
A3.04 1/2"=1'-0"

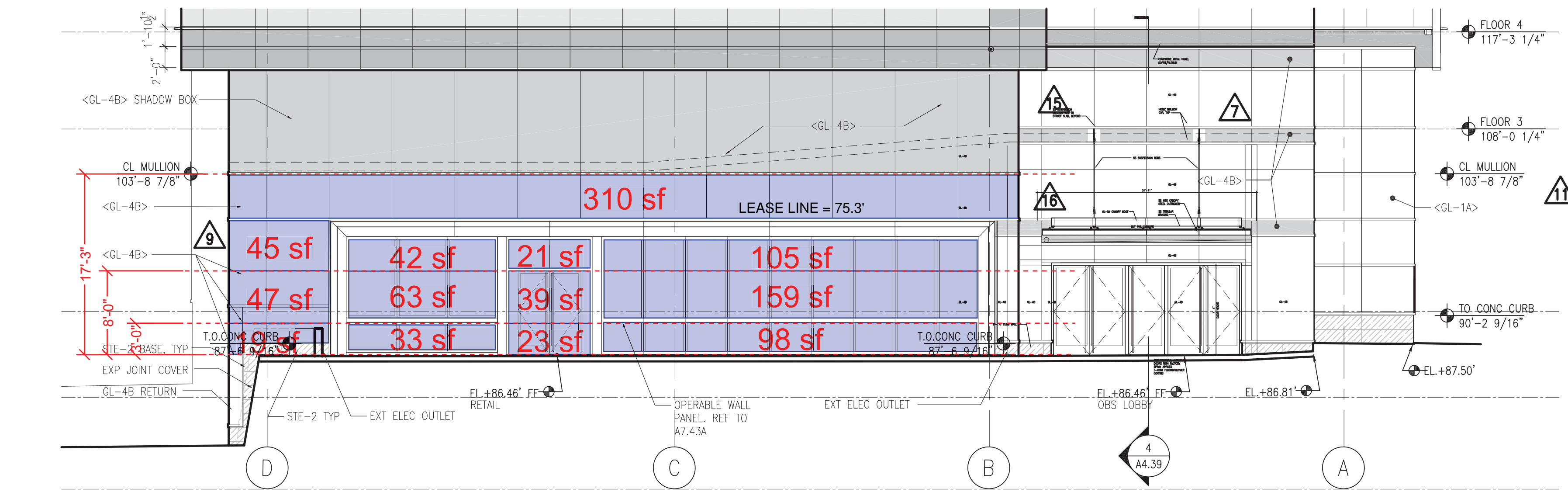
STONE JOINT ELEVATION LOG

STONE JOINT	94'-2 9/16"	WILSON/STONE JOINT
STONE JOINT	93'-6 9/16"	
STONE JOINT	92'-10 9/16"	WILSON/STONE JOINT
STONE JOINT	91'-6 9/16"	
STONE JOINT	90'-2 9/16"	
STONE JOINT	88'-10 9/16"	
STONE JOINT	87'-6 9/16"	
STONE JOINT	86'-2 9/16"	
STONE JOINT	84'-10 9/16"	
STONE JOINT	83'-6 9/16"	
STONE JOINT	82'-2 9/16"	
STONE JOINT	80'-10 9/16"	
STONE JOINT	79'-6 9/16"	
STONE JOINT	78'-2 9/16"	

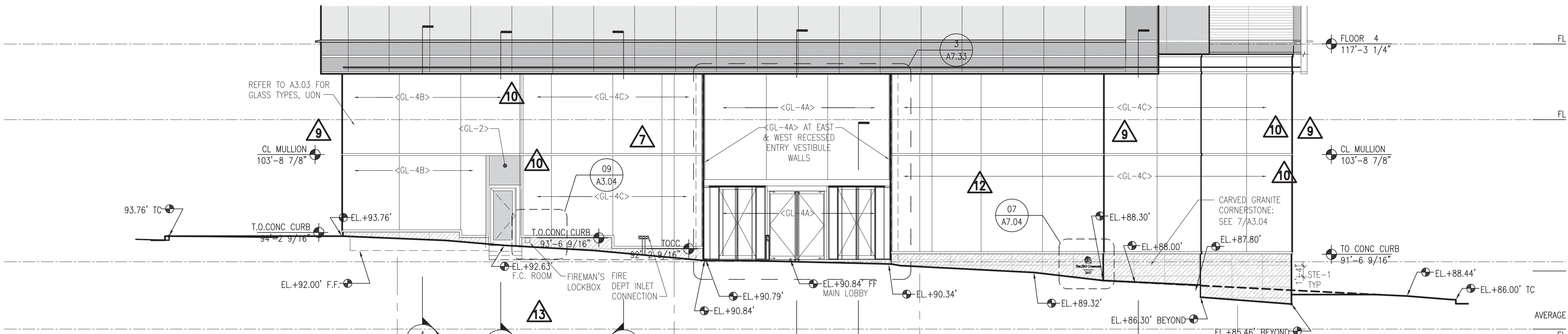
6 STONE JOINT ELEVATION LOG
A3.04 3/8"=1'-0"



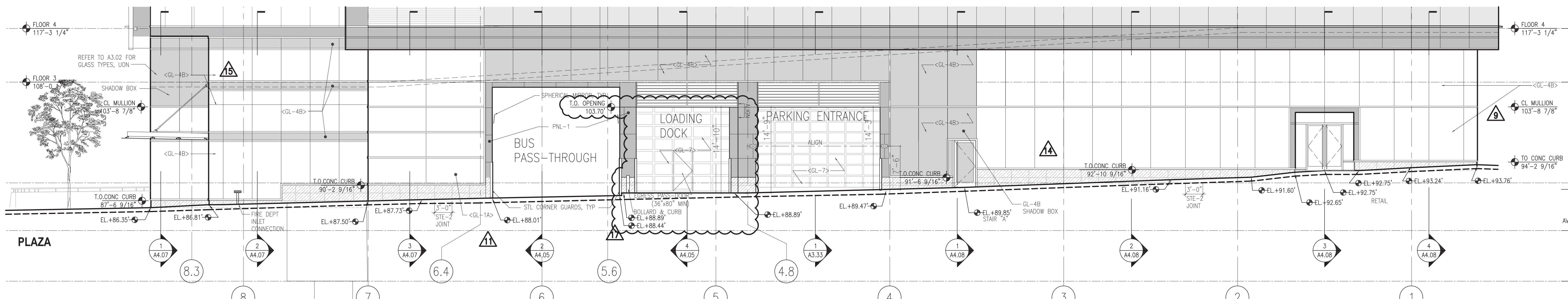
5 NORTH BUILDING ELEVATION
PLAZA
A3.04 1/8"=1'-0"



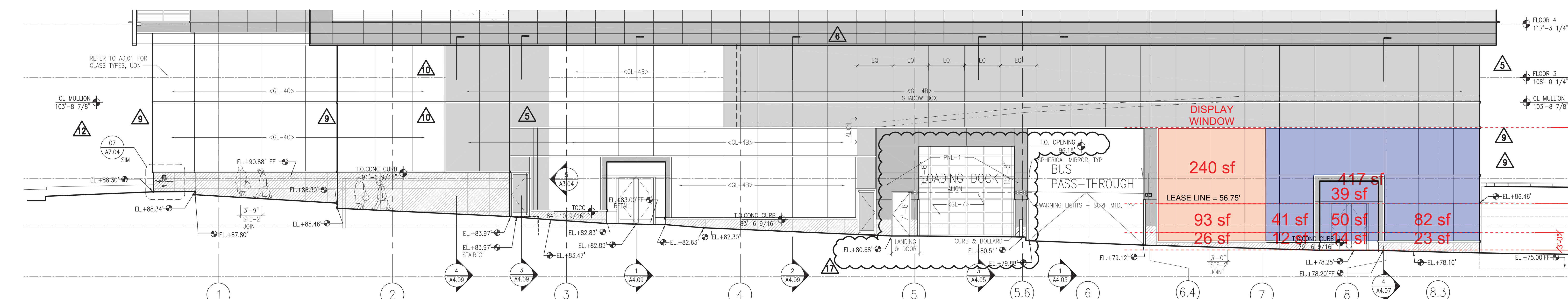
4 NORTH BUILDING ELEVATION
PLAZA
A3.04 1/8"=1'-0"



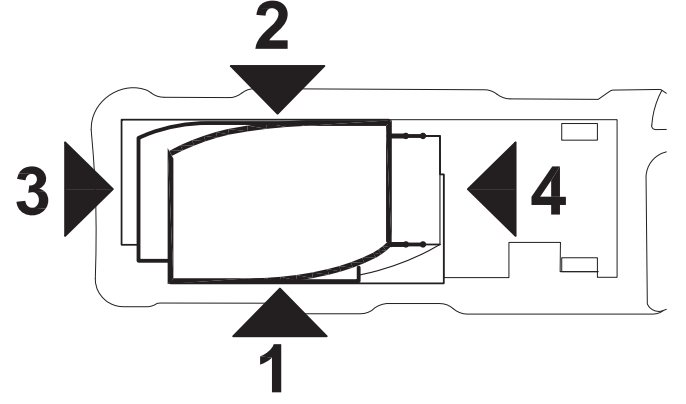
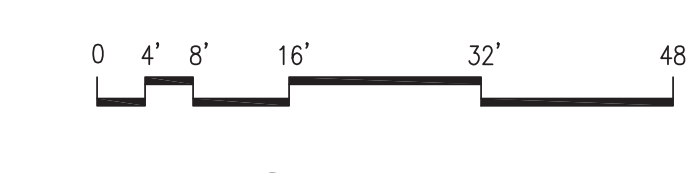
3 SOUTH BUILDING ELEVATION
WILSON BLVD.
A3.04 1/8"=1'-0"



2 WEST BUILDING ELEVATION
N. MOORE STREET
A3.04 1/8"=1'-0"



1 EAST BUILDING ELEVATION
N. LYNN STREET
A3.04 1/8"=1'-0"

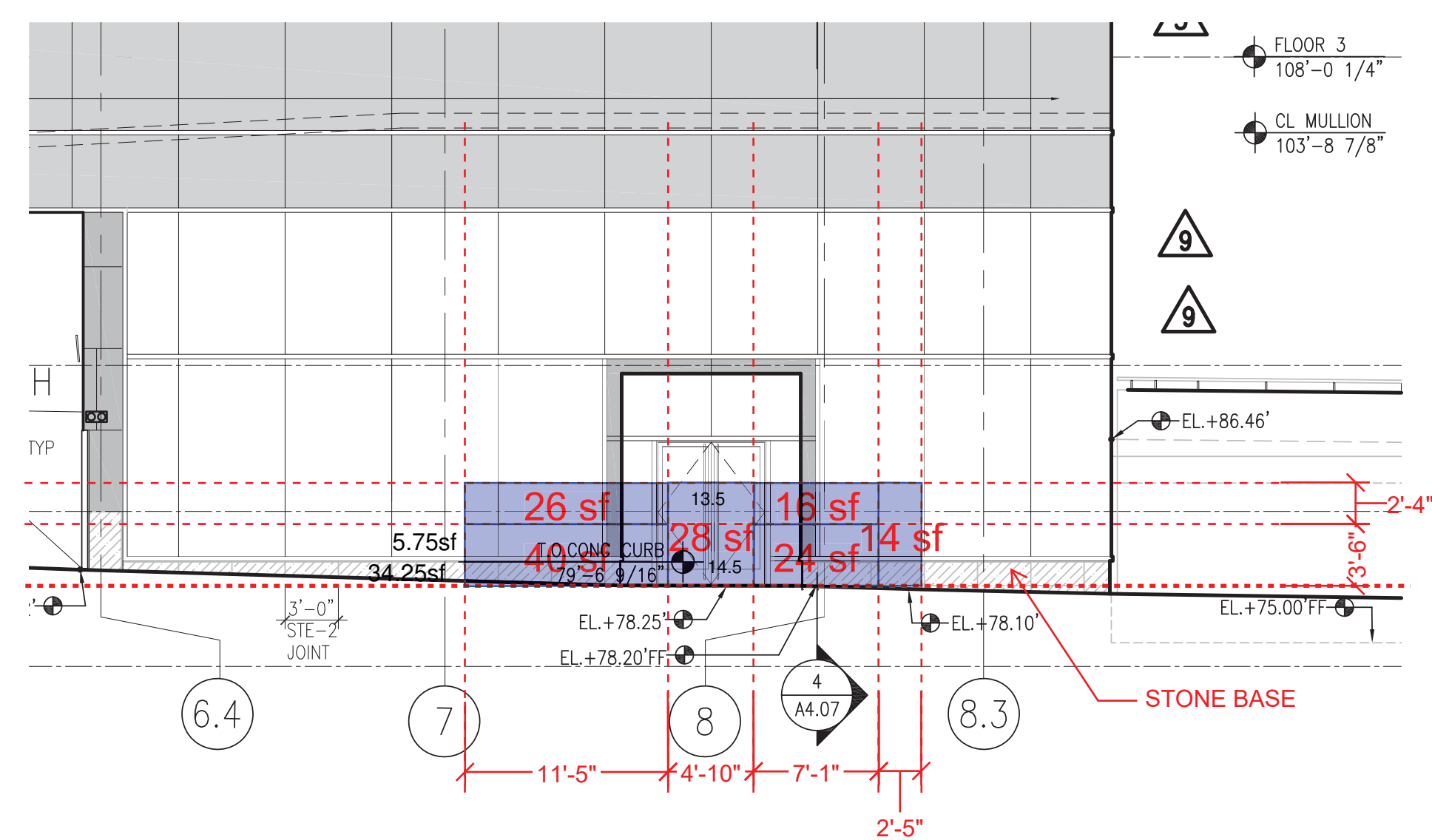


CONSTRUCTION DOCUMENTS

Revision Log

No.	Date	Description
02.01.16	ASI #221 SKC 221B REV 1	
12.16.15	ASI #211 SKC 211C	
12.11.15	ASI #210 SKC 210L	
10.16.15	ASI #190 SKC 190I RFI #441	
09.23.15	ASI #182 SKC 182G	
09.18.15	ASI #180 SKC 180AC	
09.03.15	ASI #172 SKC 172D	
08.11.15	ASI #152 SKC 152A	
06.11.15	ASI #120 SKC 120D RFI #258	
05.29.15	ASI #109 SKC 109D RFI #208	
05.06.15	ASI #96 SKC 96H	
03.10.15	ASI #55 SKC 55C	
02.11.15	ASI #35 SKC 35D RFI #102	
07.01.14	ADDENDUM 4 - 100% CD	
04.30.14	ADDENDUM 2 - 30% PROGRESS SET	

Partial Building Elevations
Scale: 1/8"=1'-0"
Date: 01 JULY 2014
BBB Project No.: 6033.35
Drawing No.:



EAST ELEVATION - EXTERIOR AT N. LYNN ST