

# PUBLIC SPACES MASTER PLAN

DRAFT



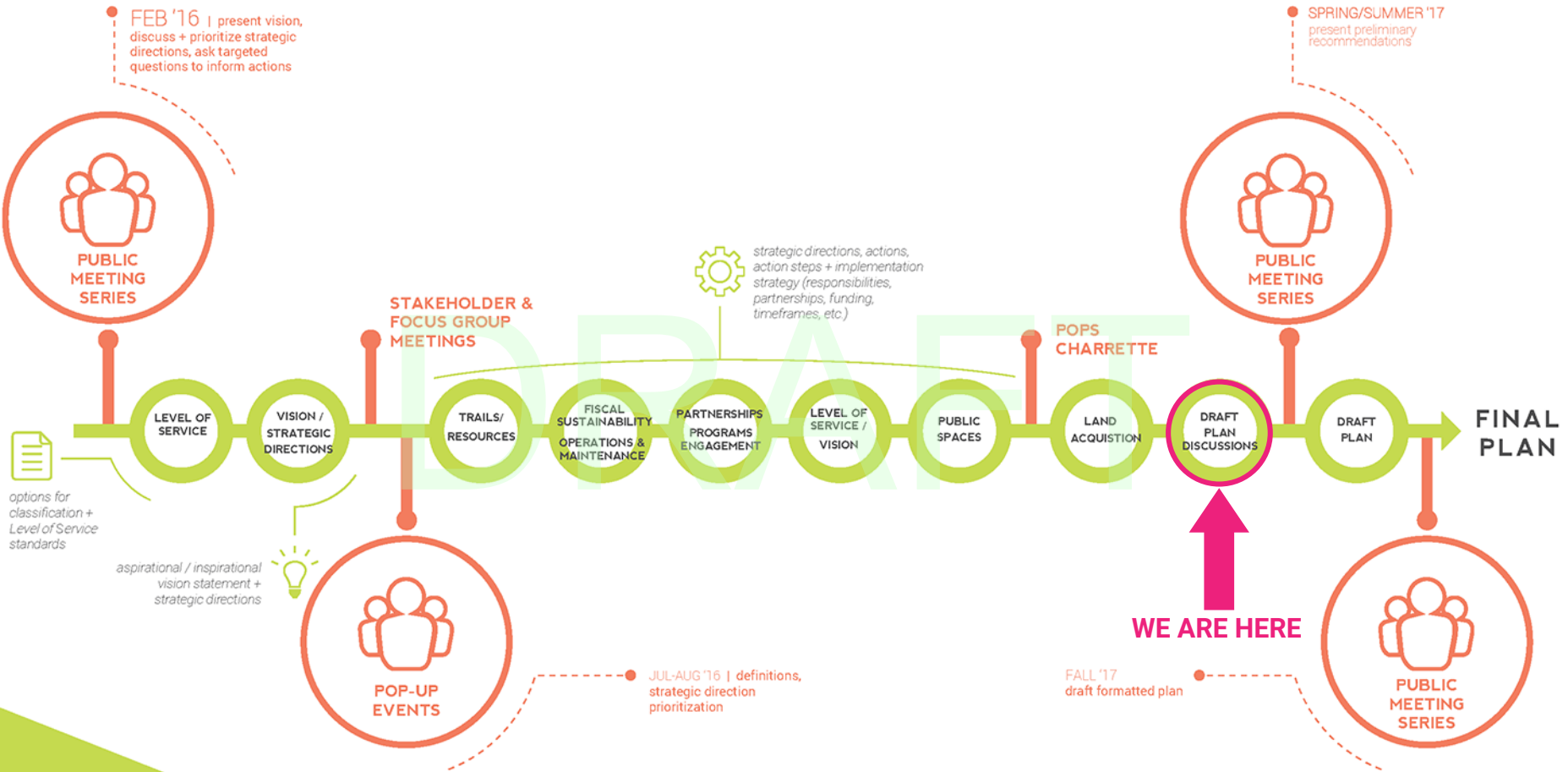
Wednesday, May 24, 2017

**NOTE: This presentation is a working document, and some recommendations or ideas may have evolved or changed based on continued discussions and additional analysis.**



# AGENDA

- 6:30– 6:35 Introduction
- 6:35– 7:15 Definitions
- 7:15– 8:00 Casual Use Spaces
- 8:00– 8:20 Priority Recommendations
- 8:20– 8:30 Next Steps



# NEXT STEPS

- **June 2-** Comments on definitions are due
- **June 12-** Revised draft
- **July (13th, 14th, 15th)** - 2nd series of public meetings (present preliminary draft)
- **Summer-** Additional POPS Advisory Committee meetings, as needed
- **Fall** - 3rd series of public meetings (present draft plan)
- **Fall/Winter** - Commission reviews
- **Winter** – County Board approval

# DEFINITIONS

## Terms Related to the PSMP

- Will be defined in the PSMP

## Terms Defined in Other County Plans

- If these terms *are* used in the PSMP, do they need to be defined?
- If these terms *are not* used in the PSMP, do they need to be defined?

## Terms Commonly Used but not Arlington Defined

- For clarity?
- For consistency?

## Terms Not Considered

# DEFINITIONS

Terms Related to the PSMP	1. public space	13. primary multi-use trail
Terms Defined in Other County Plans	2. park/parkland	14. secondary multi-use trail
	3. plaza	15. connecting trail
Terms Commonly Used but not Arlington Defined	4. natural lands	16. protected on-street trail
	5. historic resources	17. hiking trail
	6. casual use space	18. green street
	7. recreation	19. framework plan
Terms Not Considered	8. recreation facility	20. park master plan
	9. recreation center	21. program/programming
	10. community center	22. privately-owned public space
	11. multi-use activity center	
	12. sports complex	

# DEFINITIONS

Terms Related to the  
PSMP

Terms Defined in Other  
County Plans

Terms Commonly Used  
but not Arlington Defined

Terms Not Considered

1. civic space
2. public realm
3. easement
4. sense of place
5. civic green
6. pedestrian pathway
7. street
8. streetscape
9. street-space

---

10. centering space
11. urban park
12. preserved natural area

# DEFINITIONS

Terms Related to the  
PSMP

1. green space
2. open space

Terms Defined in Other  
County Plans

Terms Commonly Used  
but not Arlington Defined

Terms Not Considered

DRAFT



# DEFINITIONS

Terms Related to the  
PSMP

Terms Defined in Other  
County Plans

Terms Commonly Used  
but not Arlington Defined

Terms Not Considered

1. active space
2. passive space
3. neighborhood park
4. community park
5. mini park
6. urban
7. suburban
8. unprogrammed spaces

# DEFINITIONS

## Potential Definition

## Definition from Other Arlington Plans/Sources

## Term

## Location in PSMP Update

1: Terms related to the PSMP document				
Term	Potential Definition	Definition from Other Arlington Plans or Other Sources	Location in PSMP Update	Comments
1.1 public space (see also public realm, civic space)	Multi-functional spaces—such as parks, plazas, trails, streets, and recreation facilities—that support recreation and leisure and that are accessible and usable by all of Arlington’s residents, workers, and visitors.	An array of public spaces—parks, natural areas, attractive streetscapes and scenic views, pedestrian passageways, landscaped buffers, historical sites, community centers, cultural spaces and athletic fields, amongst others—helps to make Arlington County an attractive and hospitable community for families, individuals, workers and visitors from all social and economic circumstances. (2005 PSMP)  An open space designated on the regulating plan, accessible to all, including Plazas, Mini-Parks, and Neighborhoods Parks. (Columbia Pike Neighborhood Form Based Code)	Throughout	
1.2 park/parkland	Land that is primarily used for recreation, leisure, or conservation of natural resources—including ancillary uses that support these primary uses (e.g., recreation facilities, storage, parking).			
1.3 plaza	Places of respite—primarily in high-density areas amid bustling streets and buildings—to sit, play and relax that may, depending on their design, also serve as small gathering and event spaces.	A public open space designated on the REGULATING PLAN that is not designed Existing Public Space System for active recreation structures such as ball fields and courts and has a maximum of 70 percent paved surface area. Plazas incorporate a higher percentage of paved surface area than other types of PUBLIC SPACES to accommodate a high pedestrian traffic level. Surface treatment and materials shall be at least 30 percent unpaved pervious surface (turf, groundcover, gravel, soil or mulch), excluding any public art or monument footprint. At least 50 percent of the unpaved pervious surface area shall be vegetated. (Columbia Pike Neighborhood Form Based Code)		
1.4 natural lands (see also natural resources, preserved natural area)		In public and private ownership, are most commonly small-scale spaces offering seating, shade, and modest public amenities along public streets and sidewalks. . These spaces are envisioned as extensions of the public street space and offer places for relaxation, socializing, and people watching. While most plazas will be privately owned and maintained, each should be fully accessible to the public. These spaces are not intended to satisfy the need for large urban parks described above, which can better accommodate other recreational uses. (Clarendon Sector Plan)		
1.5 historic resources	Areas with a defined historical architectural, archaeological, and cultural component. Examples are County-owned historic buildings (community centers, schools, offices), civil war forts, cemeteries, Native American sites, structures (such as bridges or roads), or other sites determined to have historical value or interest to the community.	Natural Lands are considered a subset of Open Space and refer to parcels of land “which have experienced only minimal human alteration or have recovered from anthropogenic disturbance under mostly natural regimes of species interaction and disturbance.” (NRMP)	NRMP description in Planning Context section; quality of life benefits section	
1.6 casual use space	Spaces intentionally designed to support casual, impromptu use, including relaxation, reflection, informal activities, and connection with nature. Some casual use spaces are generally available, while others are available at designated times.		1.3.1.	

# CASUAL USE SPACES: DRAFT PLAN

## 1.3.1. Ensure access to spaces that are intentionally designed to support casual, impromptu use and connection with nature.

*Throughout the POPS process, the Advisory Committee and stakeholders expressed the need to preserve and create spaces that the community can use for relaxation, reflection, and informal activities. Sometimes referred to as “unprogrammed” spaces, these spaces are as essential to a functioning public space system as spaces that support organized sports and recreation programs. Such spaces shall not be just spaces left over after accommodating other amenities, but rather intentionally designed to support casual, impromptu use.*

# BASED ON YOUR FEEDBACK

## Turn up the volume

- Promote 1.3.1. to its own action
- Highlight the action up front as a priority
- Add a sidebar

## Add more detail

- Add a target number/percentage
- Perform access analysis for these spaces (if they can be mapped)

# SIDEBAR ADDITIONS

## Example Uses

- Strolling through a treed area
- Sitting on a bench
- Laying on a lawn
- Picnicking
- Reading a book
- People watching
- Bird watching
- Playing catch

DRAFT

# SIDEBAR ADDITIONS

## How the PSMP Supports Enhancing and Creating Casual Use Spaces

Framework Plans	Access Standards	Park Master Planning Process	Park Master Plans	Community Engagement
<p>As the County develops framework plans for all public spaces (1.2.2.), casual use spaces will be identified as areas distinct from those that support more formal recreation programs.</p>	<p><i>If these spaces can be inventoried:</i> As part of its context-sensitive, activity-based approach to providing amenities (1.3.), the County will use access standards to determine where access is lacking to casual use spaces.</p>	<p>Resident input during the park master planning process will inform whether casual use spaces should be enhanced or added (1.3.2.).</p>	<p>Any casual use spaces identified in 10 new park master plans to be developed by the County (1.2.3.) will be purposefully designed.</p>	<p>Through inclusive and transparent community engagement practices (6.3.3.) and ongoing public space evaluations (6.3.4.), users will be empowered to advocate for casual use spaces.</p>

# BASED ON YOUR FEEDBACK

## Turn up the volume

- Promote 1.3.1. to its own action
- Highlight the action up front as a priority
- Add a sidebar

## Add more detail

- Add a target number/percentage
- Perform access analysis for these spaces (if they can be mapped)



# CASUAL USE SPACES-EXAMPLES

## General Public Spaces

- Rockwell Park off the bike path between 2nd & 1st Rd. N.
- Glebe Park
- Big Walnut Park
- Potomac Overlook (concerts on the lawn as well as trails)
- Bluemont Park: sledding hill below Reeves Farm
- Quincy Park would be a natural location for such a space
- Gathering spaces in Alcova Heights Park
- Fort Smith Park, both the historic features and the expansive natural areas
- TJ Park, the southeast corner and the walking path
- Herselle Milliken Park
- Virginia Highlands Park (near the sprayground)
- Nelly Custis Park (most of it)

## Schoolgrounds

- Some of the neighborhood schools (Nottingham ES, Jamestown ES, Williamsburg MS, Reed-Westover)
- Elementary school grounds
- The open area adjacent to the Carlin Springs playground



# CASUAL USE SPACES-EXAMPLES

## Wooded Areas

- The hillside from Taylor School down to Donaldson Run
- The area off of N. Richmond St. between 41st St. N. and N. Randolph St. where you can find one of Arlington's champion Silky Dogwoods.
- The wooded areas in Alcova Heights Park

## Fields

- The field space at Woodlawn Park
- Bluemont Park: two ball fields
- W&L ball field (when the fences come down)

## Plazas & Esplanades

- Clarendon Central Park
- Long Bridge Park esplanade & overlook

# CASUAL USE SPACES

## INCLUDE

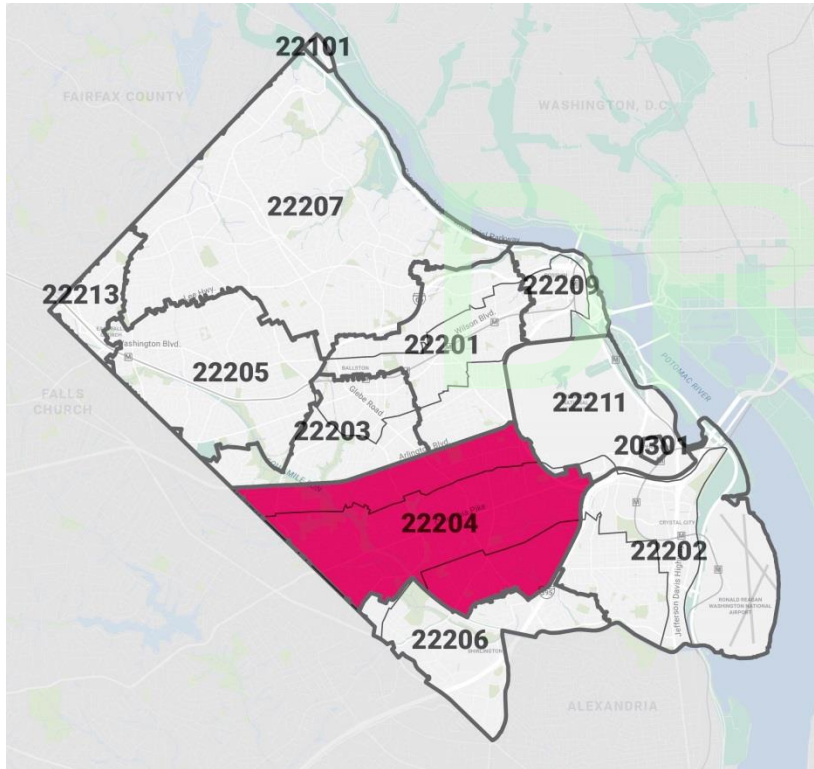
*some available always, some at times*

- open lawn with/without seating
- grill/picnic areas (including shelters)
- accessible forested areas
- accessible landscaped areas
- plazas
- esplanades
- outdoor tracks
- fields with community use
- amphitheaters
- multi-use, paved courts
- schoolgrounds

## DO NOT INCLUDE

- community gardens
- parking lots
- spraygrounds
- batting cages, dugouts
- indoor or outdoor pools
- permit only fields
- skateparks
- playgrounds
- disc golf

# CASUAL USE SPACES-22204



AFT

ZIP Code 22204 used as a test area

# CASUAL USE SPACES-MAPPING

Existing GIS Data



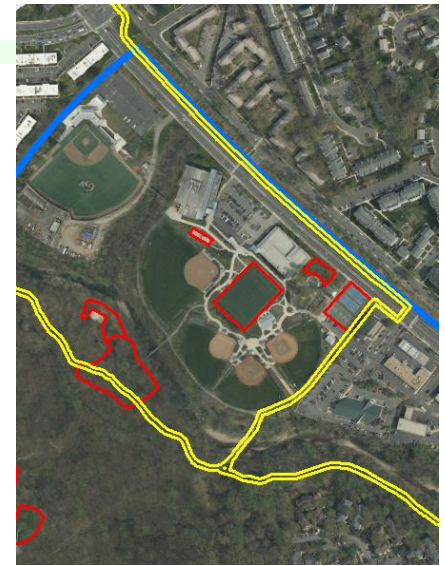
Aerial Photos & Street Views



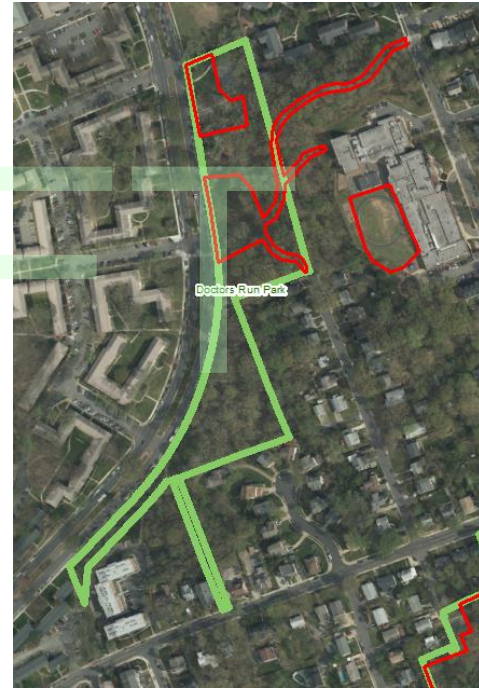
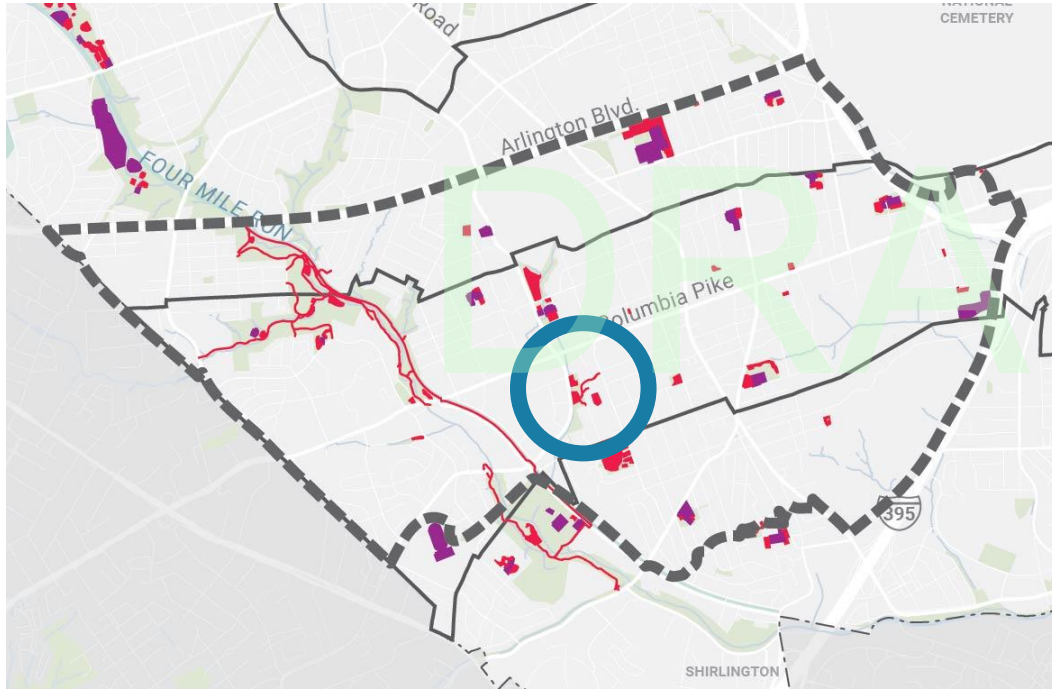
Site Visits Clarify



Map

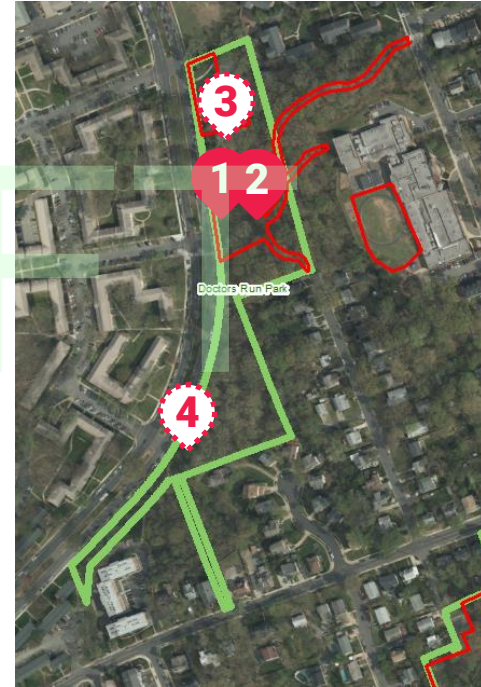
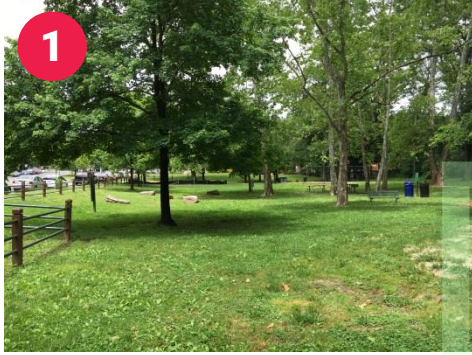


# DOCTOR'S RUN PARK



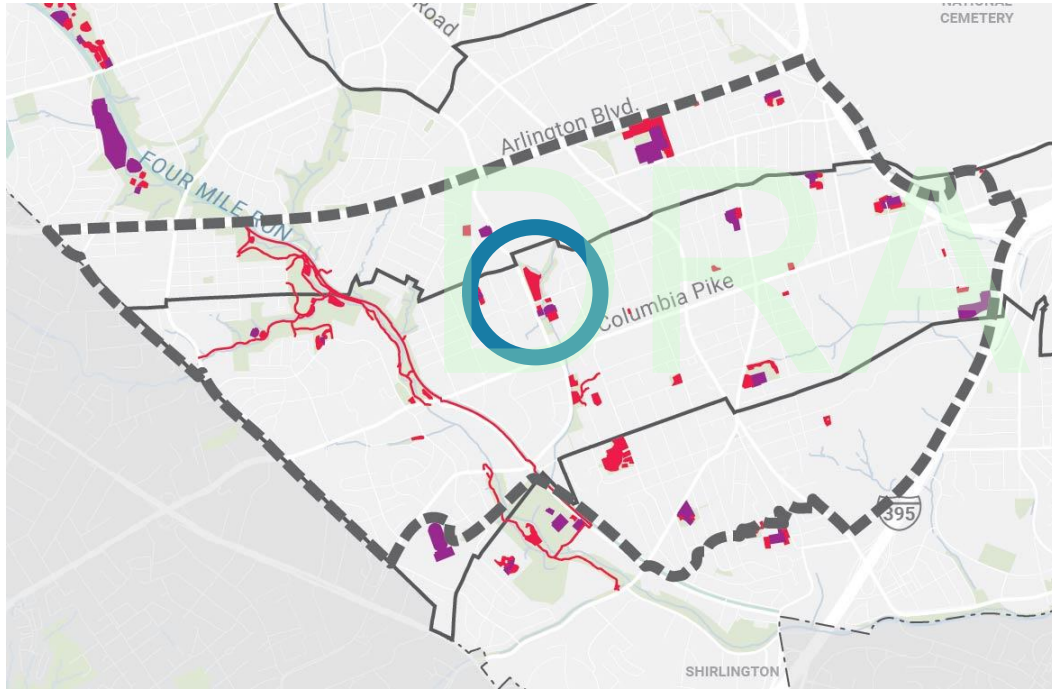
■ generally available    ■ available at times

# DOCTOR'S RUN PARK



● included    ○ not included

# ALCOVA HEIGHTS PARK



■ generally available    ■ available at times

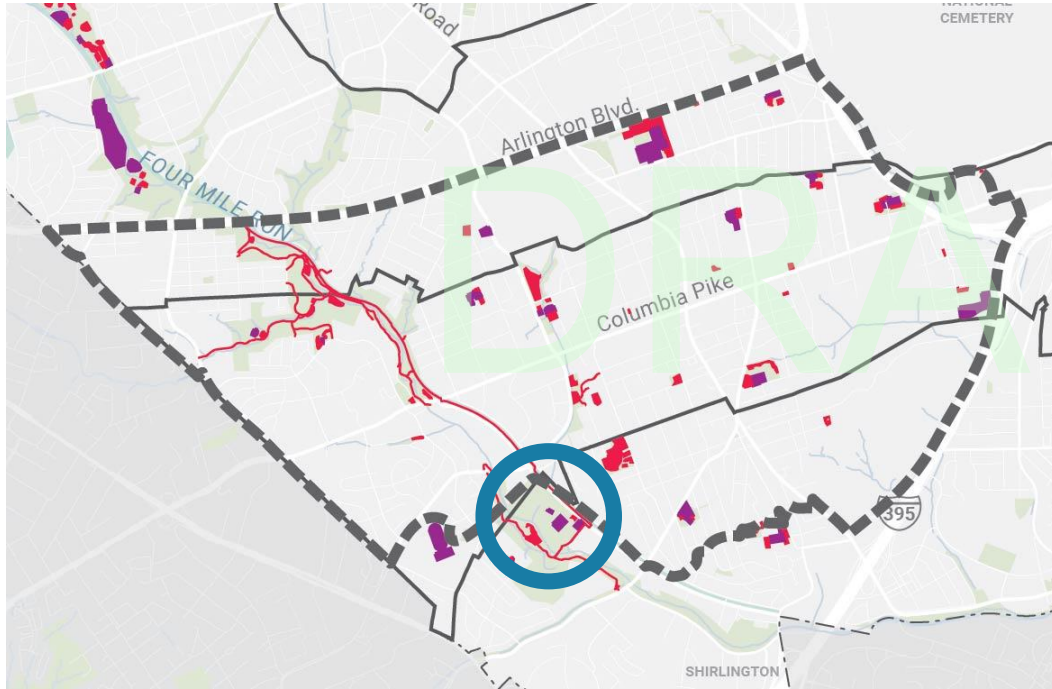
# ALCOVA HEIGHTS PARK



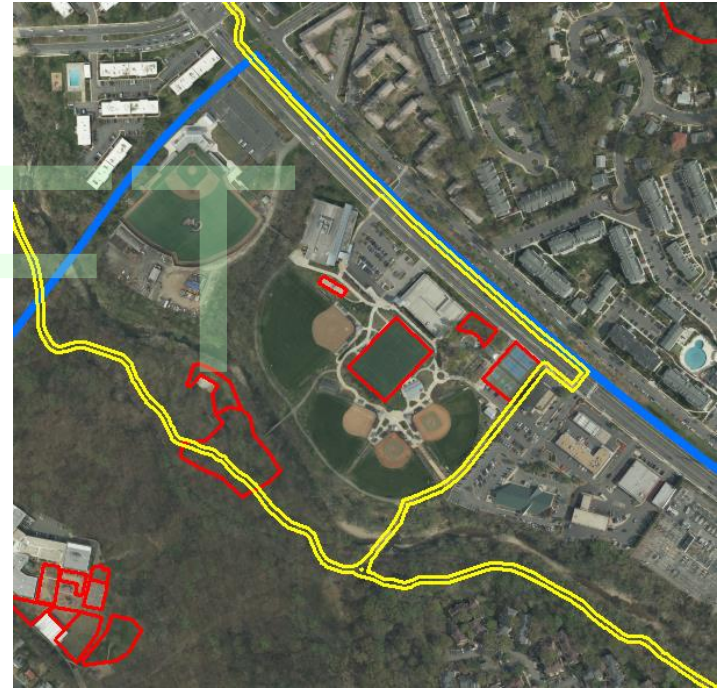
● included    ○ not included



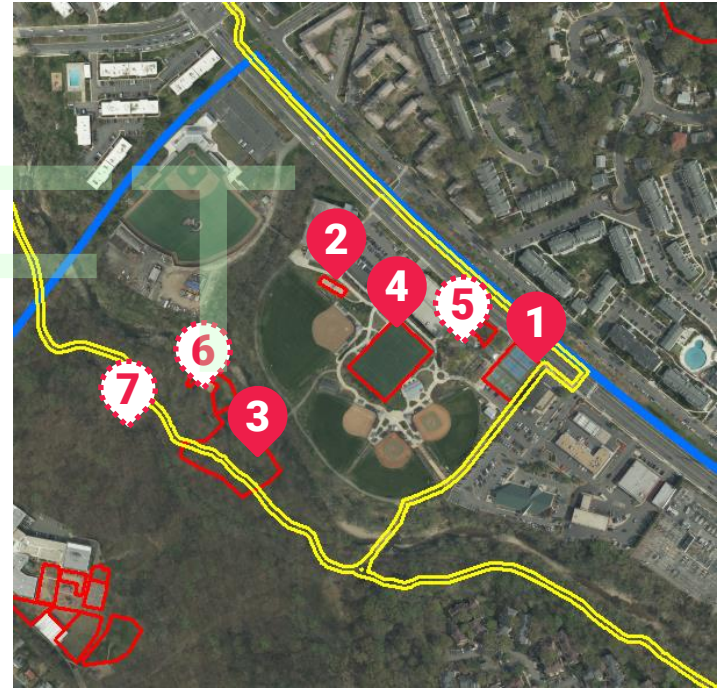
# BARCROFT PARK



■ generally available   ■ available at times

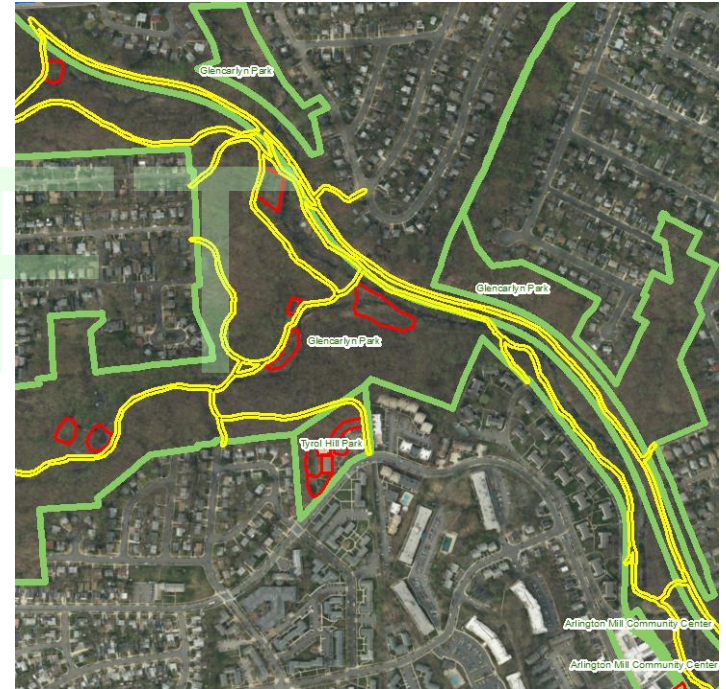
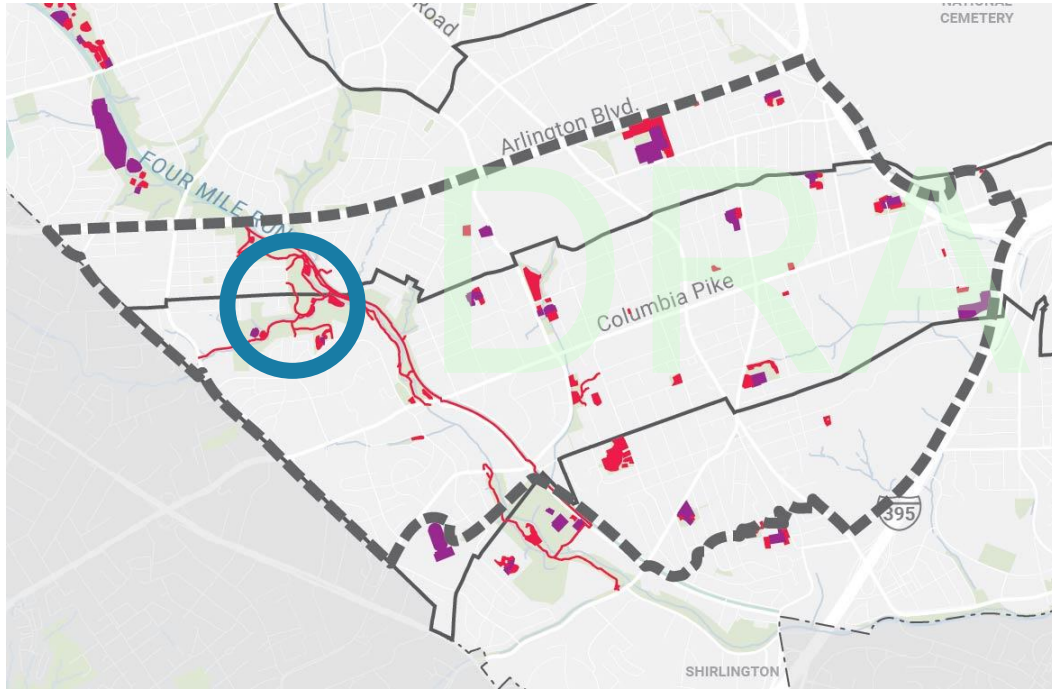


# BARCROFT PARK



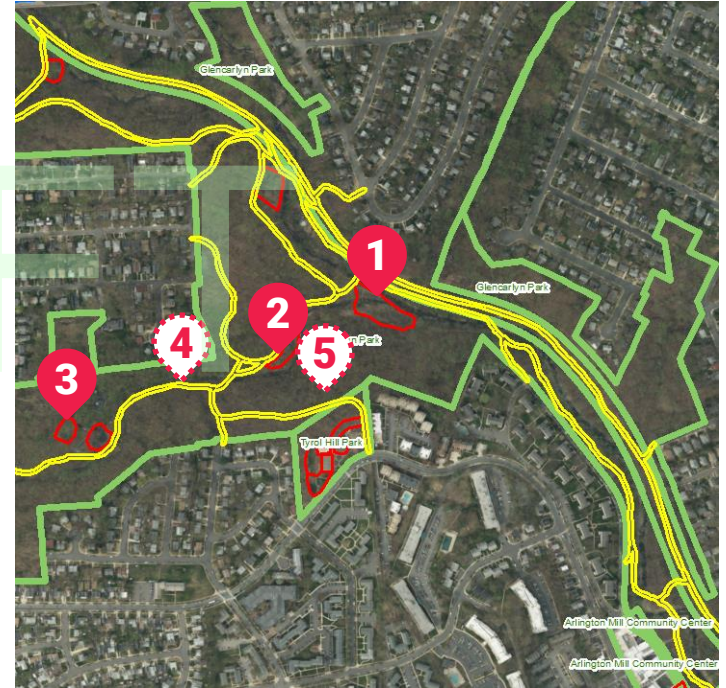
● included    ● not included

# GLENCARLYN PARK



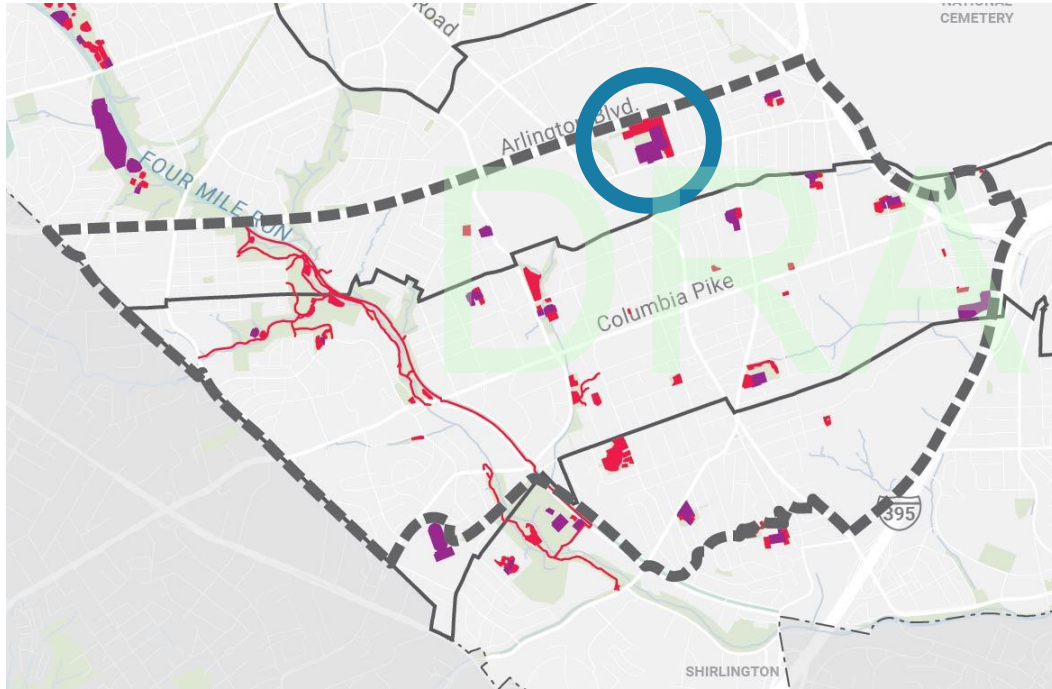
■ generally available    ■ available at times

# GLENCARLYN PARK



● included    ○ not included

# THOMAS JEFFERSON PARK



■ generally available    ■ available at times

# THOMAS JEFFERSON PARK



● included

# CASUAL USE SPACES – ISSUES

## INCLUDE or NOT?

- Ponds (Glencarlyn Park)
- Glencarlyn Dog Park
- Sand or crushed stone volleyball courts
- Nature Play Area- Glencarlyn Park



## DIFFICULT TO MAP:

- Hiking trails
- Any trails through forested areas



# ACCESS STANDARDS

5 min high density  
10 min low density

---

Basketball Courts

---

Community Gardens

---

**Casual Use Spaces**

---

Multi-Use Trails

---

Off-Leash Dog Parks

---

Playgrounds

---

10 min high density  
20 min low density

---

Diamond Fields

---

Tennis Courts

---

Picnic Areas

---

Rectangular Fields

---

Volleyball Courts

---

no access standards

---

Comm., Rec., and Sports Ctrs.

---

Hiking Trails

---

Indoor and Outdoor Pools

---

Natural Lands

---

Nature Centers

---

Skate Parks

---

Small Game Courts

---

Spraygrounds

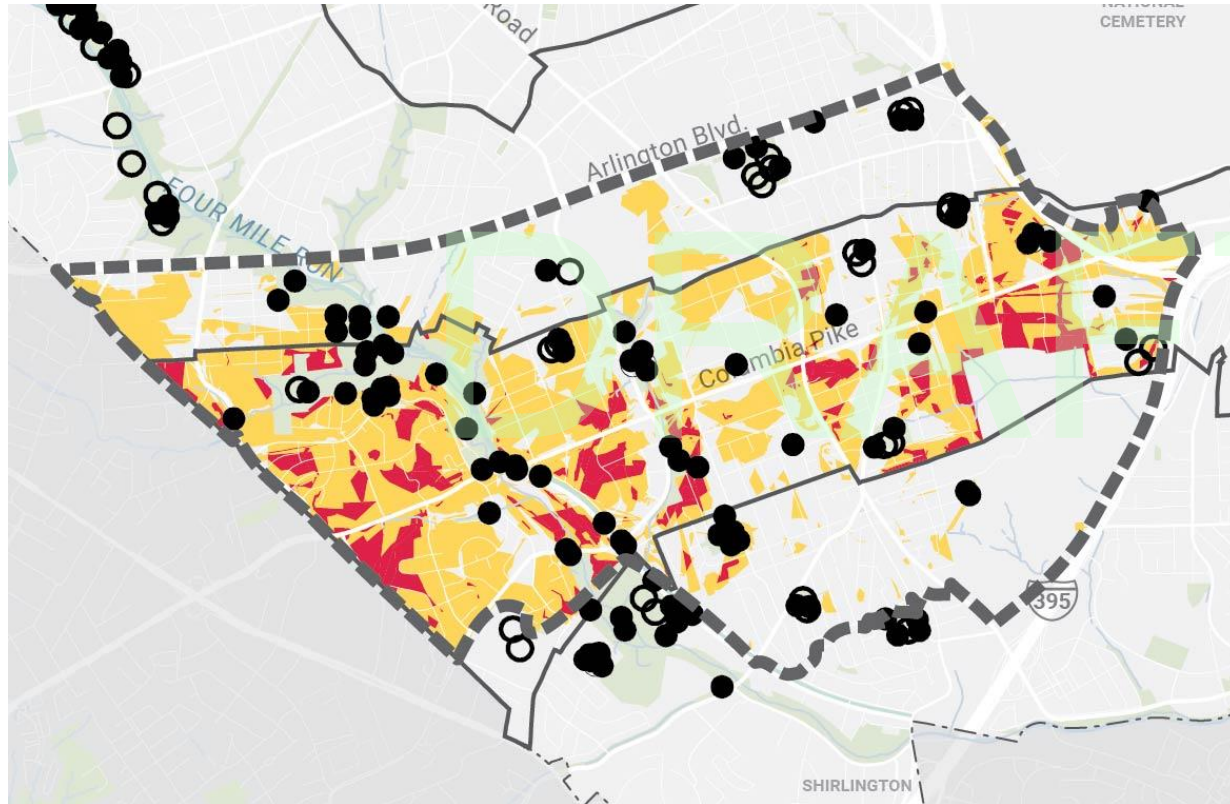
---

Tracks

---



# CASUAL USE SPACES-22204




● generally available ○ available at times

# BASED ON YOUR FEEDBACK

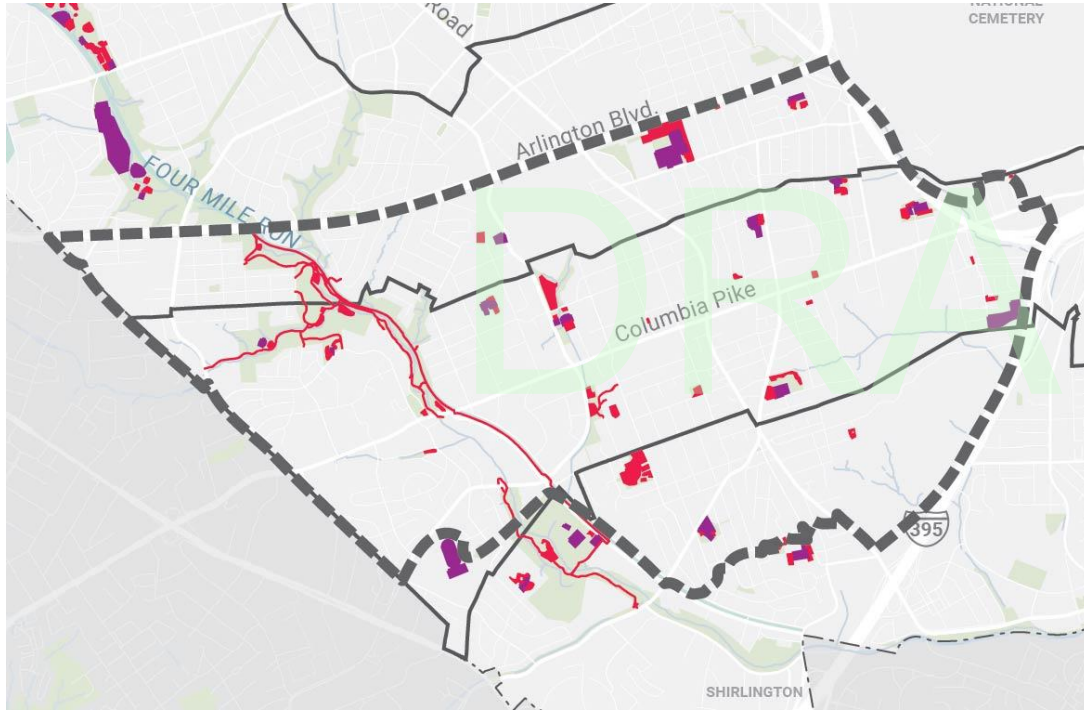
## Turn up the volume

- Promote 1.3.1. to its own action
- Highlight the action up front as a priority
- Add a sidebar

## Add more detail

- 
- Add a target number/percentage
    - Perform access analysis for these spaces (if they can be mapped)

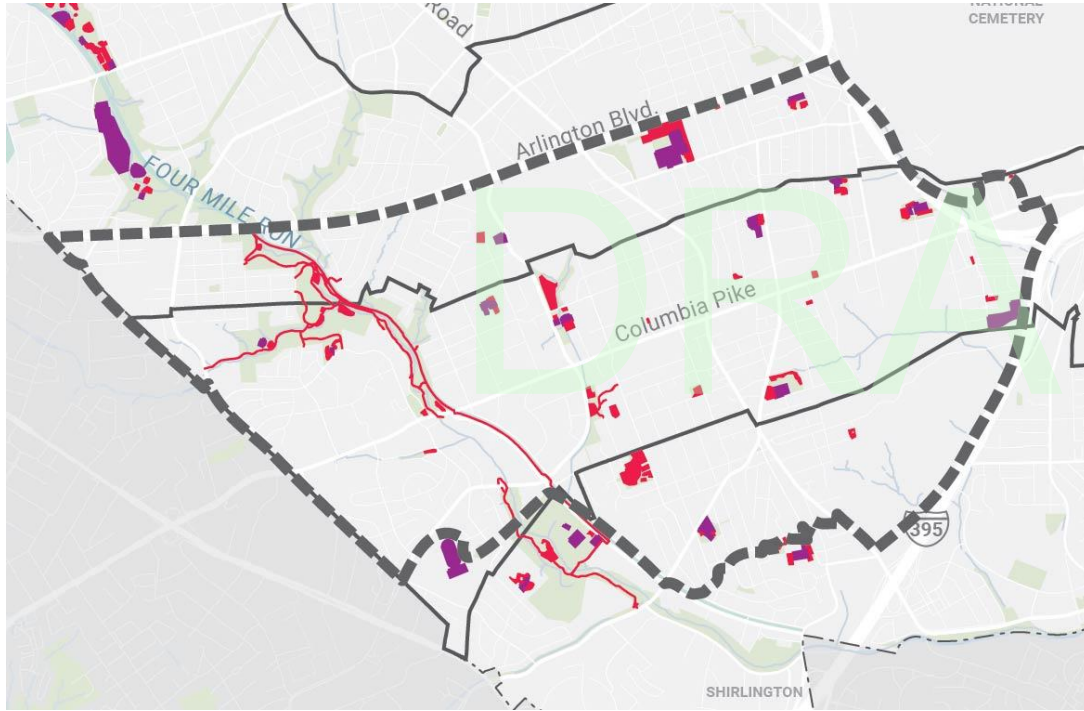
# ACREAGE



■ generally available    ■ available at times

- 52.2 acres generally available
- 31.5 acres available at times
- 83.7 acres total

# POTENTIAL TARGETS?



■ generally available    ■ available at times

- Percentage of total public space
  - 22% in 22204
- Population-based standard
  - 1 acre/598 people in 22204
- Percentage of each public space

# BASED ON YOUR FEEDBACK

## Turn up the volume

- Promote 1.3.1. to its own action
- Highlight the action up front as a priority
- Add a sidebar

## Add more detail

- Add a target number/percentage
- Perform access analysis for these spaces (if they can be mapped)
- Casual use space guidelines



# POTENTIAL PRIORITY ACTIONS

## Short-Term Priorities

- Update the Urban Forest Master Plan and Natural Resource Master Plan.
- Complete the implementation of County Board-adopted phased park master plans at Long Bridge, Mosaic, Penrose Square, and Four Mile Run.
- Focus on the implementation of Rosslyn Highlands and Jennie Dean master plans.

## Medium- to Long-Term / Ongoing Priorities

- Ensure access to spaces that are intentionally designed to support casual, impromptu use and connection with nature.
- Acquire 30 acres of new public space over the next 10 years.
- Complete an “Arlington Circuit” of connected, protected multi-use trails.
- Develop park master plans for 10 parks, to be adopted by the County Board and framework plans for all remaining public spaces.
- Use level of service analysis and definitions to guide planning decisions including park master planning, discussions with APS, updating sector and area plans, evaluating site plans, and considering TDR's.
- Ensure high-quality visual and physical access to the Potomac River, Four Mile Run, and their tributaries.

# NEXT STEPS

- **June 2-** Comments on definitions are due
- **June 12-** Revised draft
- **July (13th, 14th, 15th)** - 2nd series of public meetings (present preliminary draft)
- **Summer-** Additional POPS Advisory Committee meetings, as needed
- **Fall** - 3rd series of public meetings (present draft plan)
- **Fall/Winter** - Commission reviews
- **Winter** – County Board approval